

# *Buckeye Born And Buckeye Raised*



@missjodi1971

Overall quilt size: 72" x 72"





## Blocks Used



Solid - 4 blocks

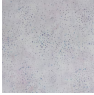
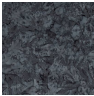



Half Square Triangle - 6 blocks

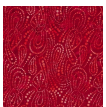


Half Square Triangle - 6 blocks

## Block Info

Fabric	Pieces used	Fabric to cut	Total length needed	40" strips needed	Total Yardage
	4 Square(s) 8 Half-square Triangle(s)	4 - 12 1/2" square 4 - 12 7/8" square	50 x 12.5" 51.5 x 12.875"	2 - 12 1/2" wide 2 - 12 7/8" wide	53" = ~1 1/2 yds
	8 Half-square Triangle(s)	4 - 12 7/8" square	51.5 x 12.875"	2 - 12 7/8" wide	28" = ~7/8 yds
	8 Half-square Triangle(s)	4 - 12 7/8" square	51.5 x 12.875"	2 - 12 7/8" wide	28" = ~7/8 yds

Border1 (For pieced border, add 10" to total length)



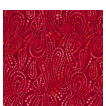
Yardage needed: seamless border length = 56" = ~1 5/8 yds

Border2 (For pieced border, add 10" to total length)



Yardage needed: seamless border length = 64" = ~1 7/8 yds

Border3 (For pieced border, add 10" to total length)



Yardage needed: seamless border length = 76" =  $\sim 2 \frac{1}{8}$  yds

## Backing

Yardage needed: 160" =  $\sim 4 \frac{1}{2}$  yds

## Binding

2.5" Strips required: 8

Yardage needed: 20" =  $\sim \frac{5}{8}$  yds

NOTE: Directional fabric may require an increase in the displayed fabric requirements.