

# Candy Wrapper



@epicnyx

Overall quilt size: 37" x 46"





## Blocks Used



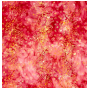




Spool - 6 blocks



Broken Dishes - 6 blocks

## Block Info

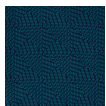
Fabric	Pieces used	Fabric to cut	Total length needed	40" strips needed	Total Yardage
	12 Rectangle(s) 24 Half-square Triangle(s)	12 - 2 3/4" x 5" rectangle 12 - 3 1/8" square	60 x 2.75" 37.5 x 3.125"	2 - 2 3/4" wide 1 - 3 1/8" wide	11" = ~3/8 yds
	24 Half-square Triangle(s) 12 Rectangle(s)	12 - 3 1/8" square 12 - 2 3/4" x 5" rectangle	37.5 x 3.125" 60 x 2.75"	1 - 3 1/8" wide 2 - 2 3/4" wide	11" = ~3/8 yds
	6 Square(s)	6 - 5" square	30 x 5"	1 - 5" wide	7" = ~1/4 yds
	24 Half-square Triangle(s)	12 - 5 3/8" square	64.5 x 5.375"	2 - 5 3/8" wide	13" = ~3/8 yds
	24 Half-square Triangle(s)	12 - 5 3/8" square	64.5 x 5.375"	2 - 5 3/8" wide	13" = ~3/8 yds

Border1 (For pieced border, add 10" to total length)



Yardage needed: seamless border length = 44" = ~1 1/4 yds

Border2 (For pieced border, add 10" to total length)



Yardage needed: seamless border length = 50" = ~1 1/2 yds

Backing

Yardage needed: 61" = ~1 3/4 yds

## Binding

2.5" Strips required: 5

Yardage needed: 12.5" = ~3/8 yds

NOTE: Directional fabric may require an increase in the displayed fabric requirements.