

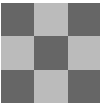


@lyndawhite090916

Overall quilt size: 38" x 52"



Blocks Used


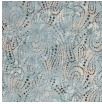



Nine Patch - 20 blocks

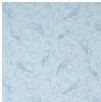


Solid - 15 blocks

Block Info

Fabric	Pieces used	Fabric to cut	Total length needed	40" strips needed	Total Yardage
	100 Square(s)	100 - 1 5/6" square	183.333 x 1.833"	5 - 1 414/497" wide	12" = ~3/8 yds
	80 Square(s)	80 - 1 5/6" square	146.667 x 1.833"	4 - 1 414/497" wide	10" = ~3/8 yds
	15 Square(s)	15 - 4 1/2" square	67.5 x 4.5"	2 - 4 1/2" wide	11" = ~3/8 yds

Sashing



Yardage needed: 13 - 3.5" strips = 45.5" = ~1 3/8 yds

Backing

Yardage needed: 69" = ~2 yds

Binding

2.5" Strips required: 5

Yardage needed: 12.5" = ~3/8 yds

NOTE: Directional fabric may require an increase in the displayed fabric requirements.