

# Picknic



@raymie5865

Overall quilt size: 124" x 124"





## Blocks Used



Half Square Triangle - 37 blocks



Half Square Triangle - 27 blocks









Pinwheel - 20 blocks



Four Patch - 16 blocks

## Block Info

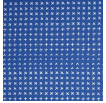
Fabric	Pieces used	Fabric to cut	Total length needed	40" strips needed	Total Yardage
	64 Half-square Triangle(s)	33 - 10 7/8" square	358.875 x 10.875"	9 - 10 7/8" wide	100" = ~2 7/8 yds
	64 Half-square Triangle(s)	33 - 10 7/8" square	358.875 x 10.875"	9 - 10 7/8" wide	100" = ~2 7/8 yds
	80 Half-square Triangle(s)	40 - 5 7/8" square	235 x 5.875"	6 - 5 7/8" wide	38" = ~1 1/8 yds
	80 Half-square Triangle(s)	40 - 5 7/8" square	235 x 5.875"	6 - 5 7/8" wide	38" = ~1 1/8 yds
	32 Square(s)	32 - 5 1/2" square	176 x 5.5"	5 - 5 1/2" wide	30" = ~7/8 yds
	32 Square(s)	32 - 5 1/2" square	176 x 5.5"	5 - 5 1/2" wide	30" = ~7/8 yds

Border1 (For pieced border, add 10" to total length)



Yardage needed: seamless border length = 108" = ~3 yds

Border2 (For pieced border, add 10" to total length)



Yardage needed: seamless border length = 116" = ~3 1/4 yds

Border3 (For pieced border, add 10" to total length)



Yardage needed: seamless border length = 128" = ~3 5/8 yds

Backing

Yardage needed: 436" = ~12 1/8 yds

Binding

2.5" Strips required: 13

Yardage needed: 32.5" = ~1 yds

NOTE: Directional fabric may require an increase in the displayed fabric requirements.