

# Adams Pattern



@ozzietimlatimer

Overall quilt size: 78" x 102"





## Blocks Used



Half Square Triangle - 4 blocks



Rail Fence Vertical - 12 blocks



Half Square Triangle - 4 blocks



Rail Fence Horizontal - 20 blocks




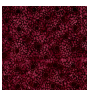
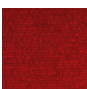


Hourglass - 4 blocks



Four Patch - 4 blocks

## Block Info

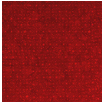
Fabric	Pieces used	Fabric to cut	Total length needed	40" strips needed	Total Yardage
	16 Half-square Triangle(s) 8 Quarter-square Triangle(s) 8 Square(s)	8 - 12 7/8" square 2 - 13 1/4" square 8 - 6 1/2" square	103 x 12.875" 26.5 x 13.25" 52 x 6.5"	3 - 12 7/8" wide 1 - 13 1/4" wide 2 - 6 1/2" wide	67" = ~1 7/8 yds
	32 Rectangle(s)	32 - 4 1/2" x 12 1/2" rectangle	400 x 4.5"	10 - 4 1/2" wide	47" = ~1 3/8 yds
	32 Rectangle(s)	32 - 4 1/2" x 12 1/2" rectangle	400 x 4.5"	10 - 4 1/2" wide	47" = ~1 3/8 yds
	32 Rectangle(s)	32 - 4 1/2" x 12 1/2" rectangle	400 x 4.5"	10 - 4 1/2" wide	47" = ~1 3/8 yds
	8 Quarter-square Triangle(s) 8 Square(s)	2 - 13 1/4" square 8 - 6 1/2" square	26.5 x 13.25" 52 x 6.5"	1 - 13 1/4" wide 2 - 6 1/2" wide	29" = ~7/8 yds

Border1 (For pieced border, add 10" to total length)



Yardage needed: seamless border length = 102" = ~2 7/8 yds

Border2 (For pieced border, add 10" to total length)



Yardage needed: seamless border length = 104" = ~3 yds

Border3 (For pieced border, add 10" to total length)



Yardage needed: seamless border length = 106" = ~3 yds

Backing

Yardage needed: 237" = ~6 5/8 yds

Binding

2.5" Strips required: 9

Yardage needed: 22.5" = ~5/8 yds

NOTE: Directional fabric may require an increase in the displayed fabric requirements.