

# The Blues



@anandrels

Overall quilt size: 89" x 89"





## Blocks Used

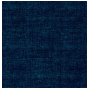

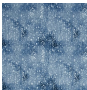




Electric Fan - 32 blocks

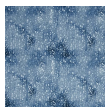


Spool - 32 blocks

## Block Info

Fabric	Pieces used	Fabric to cut	Total length needed	40" strips needed	Total Yardage
	128 Quarter-square Triangle(s) 128 Half-square Triangle(s) 64 Rectangle(s)	32 - 5 1/4" square 64 - 2 7/8" square 64 - 2 1/2" x 4 1/2" rectangle	168 x 5.25" 184 x 2.875" 288 x 2.5"	5 - 5 1/4" wide 5 - 2 7/8" wide 8 - 2 1/2" wide	63" = ~1 3/4 yds
	128 Quarter-square Triangle(s)	32 - 5 1/4" square	168 x 5.25"	5 - 5 1/4" wide	29" = ~7/8 yds
	256 Quarter-square Triangle(s)	64 - 5 1/4" square	336 x 5.25"	9 - 5 1/4" wide	50" = ~1 1/2 yds
	64 Rectangle(s) 128 Half-square Triangle(s)	64 - 2 1/2" x 4 1/2" rectangle 64 - 2 7/8" square	288 x 2.5" 184 x 2.875"	8 - 2 1/2" wide 5 - 2 7/8" wide	37" = ~1 1/8 yds
	32 Square(s)	32 - 4 1/2" square	144 x 4.5"	4 - 4 1/2" wide	20" = ~5/8 yds

## Sashing



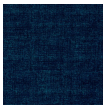
Yardage needed: 35 - 1.5" strips = 52.5" = ~1 1/2 yds

## Border1 (For pieced border, add 10" to total length)



Yardage needed: seamless border length = 81" = ~2 1/4 yds

Border2 (For pieced border, add 10" to total length)



Yardage needed: seamless border length = 93" =  $\sim 2 \frac{5}{8}$  yds

## Backing

Yardage needed: 236" =  $\sim 6 \frac{5}{8}$  yds

## Binding

2.5" Strips required: 9

Yardage needed: 22.5" =  $\sim \frac{5}{8}$  yds

NOTE: Directional fabric may require an increase in the displayed fabric requirements.