

The Courtyard



@tanya97ml

Overall quilt size: 52" x 68"



Blocks Used



Double Flying Geese - 4 blocks



Nine Patch Straight Furrow - Right - 8 blocks



Block in a Box - 6 blocks



Ohio Star - 4 blocks



Nine Patch - 8 blocks











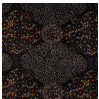


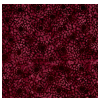

Plus - 4 blocks



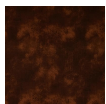
West Virginia Square - 1 blocks

Block Info

Fabric	Pieces used	Fabric to cut	Total length needed	40" strips needed	Total Yardage
	64 Half-square Triangle(s) 1 Unique(s)	32 - 2 7/8" square 1 - Undefined	92 x 2.875" 0 x 0"	3 - 2 7/8" wide 0 - 0" wide	11" = ~3/8 yds
	8 Half-square Triangle(s)	4 - 4 7/8" square	19.5 x 4.875"	1 - 4 7/8" wide	7" = ~1/4 yds
	8 Half-square Triangle(s)	4 - 4 7/8" square	19.5 x 4.875"	1 - 4 7/8" wide	7" = ~1/4 yds
	8 Half-square Triangle(s)	4 - 4 7/8" square	19.5 x 4.875"	1 - 4 7/8" wide	7" = ~1/4 yds
	8 Half-square Triangle(s)	4 - 4 7/8" square	19.5 x 4.875"	1 - 4 7/8" wide	7" = ~1/4 yds

	8 Square(s) 24 Half-square Triangle(s)	8 - 3 1/6" square 12 - 3 13/24" square	25.333 x 3.167" 42.5 x 3.542"	1 - 3 83/497" wide 2 - 3 13/24" wide	13" = ~3/8 yds
	32 Square(s)	32 - 3 1/6" square	101.333 x 3.167"	3 - 3 83/497" wide	12" = ~3/8 yds
	24 Half-square Triangle(s) 8 Square(s) 1 Unique(s)	12 - 3 13/24" square 8 - 3 1/6" square 1 - Undefined	42.5 x 3.542" 25.333 x 3.167" 0 x 0"	2 - 3 13/24" wide 1 - 3 83/497" wide 0 - 0" wide	13" = ~3/8 yds
	16 Rectangle(s) 20 Square(s)	16 - 3 1/6" x 8 1/2" rectangle 20 - 3 1/6" square	199.333 x 3.167"	5 - 3 83/497" wide	18" = ~1/2 yds
	22 Square(s) 32 Quarter-square Triangle(s)	22 - 3 1/6" square 8 - 3 11/12" square	69.667 x 3.167" 31.333 x 3.917"	2 - 3 83/497" wide 1 - 3 11/12" wide	13" = ~3/8 yds
	32 Quarter-square Triangle(s) 16 Square(s)	8 - 3 11/12" square 16 - 3 1/6" square	31.333 x 3.917" 50.667 x 3.167"	1 - 3 11/12" wide 2 - 3 83/497" wide	13" = ~3/8 yds
	4 Square(s)	4 - 3 1/6" square	12.667 x 3.167"	1 - 3 83/497" wide	6" = ~1/4 yds
	40 Square(s) 1 Unique(s)	40 - 3 1/6" square 1 - Undefined	126.667 x 3.167" 0 x 0"	4 - 3 83/497" wide 0 - 0" wide	15" = ~1/2 yds
	32 Square(s)	32 - 3 1/6" square	101.333 x 3.167"	3 - 3 83/497" wide	12" = ~3/8 yds

Border1 (For pieced border, add 10" to total length)



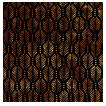
Yardage needed: seamless border length = 64" = ~1 7/8 yds

Border2 (For pieced border, add 10" to total length)



Yardage needed: seamless border length = 66" = ~1 7/8 yds

Border3 (For pieced border, add 10" to total length)



Yardage needed: seamless border length = 72" = ~2 yds

Backing

Yardage needed: 114" = ~3 1/4 yds

Binding

2.5" Strips required: 6

Yardage needed: 15" = ~1/2 yds

NOTE: Directional fabric may require an increase in the displayed fabric requirements.