

USA



@maryheefner

Overall quilt size: 58" x 58"



Blocks Used



Four Patch - 6 blocks



London Square- Left - 3 blocks



Rail Fence Vertical - 2 blocks



Block in a Box - 2 blocks



Plus - 3 blocks



Solid - 12 blocks



Rail Fence Horizontal - 2 blocks



Horizontal Rectangles - 2 blocks









Interlock 1 - 3 blocks



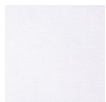
London Square- Right - 1 blocks

Block Info

Fabric	Pieces used	Fabric to cut	Total length needed	40" strips needed	Total Yardage
--------	-------------	---------------	---------------------	-------------------	---------------

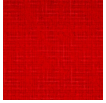
	21 Square(s) 15 Rectangle(s)	6 - 4 1/2" square 4 - 2 1/2" x 6 1/2" rectangle 4 - 2 1/2" x 4 1/2" rectangle 4 - 2 1/2" square 7 - 3 1/6" x 8 1/2" rectangle 8 - 3 1/6" square 3 - 8 1/2" square	27 x 4.5" 54 x 2.5" 84.833 x 3.167" 25.5 x 8.5"	1 - 4 1/2" wide 2 - 2 1/2" wide 3 - 3 83/497" wide 1 - 8 1/2" wide	30" = ~7/8 yds
	22 Square(s) 12 Rectangle(s)	12 - 4 1/2" square 4 - 2 1/2" x 6 1/2" rectangle 4 - 2 1/2" x 4 1/2" rectangle 4 - 2 1/2" square 2 - 3 1/6" x 8 1/2" rectangle 6 - 8 1/2" square 2 - 4 1/2" x 8 1/2" rectangle	71 x 4.5" 54 x 2.5" 17 x 3.167" 51 x 8.5"	2 - 4 1/2" wide 2 - 2 1/2" wide 1 - 3 83/497" wide 2 - 8 1/2" wide	37" = ~1 1/8 yds
	41 Square(s) 6 Rectangle(s) 9 Unique(s)	16 - 2 1/2" square 6 - 3 1/6" x 8 1/2" rectangle 16 - 3 1/6" square 6 - 4 1/2" square 3 - 8 1/2" square 9 - Undefined	40 x 2.5" 101.667 x 3.167" 27 x 4.5" 25.5 x 8.5" 0 x 0"	1 - 2 1/2" wide 3 - 3 83/497" wide 1 - 4 1/2" wide 1 - 8 1/2" wide 0 - 0" wide	28" = ~7/8 yds
	2 Rectangle(s)	2 - 3 1/6" x 8 1/2" rectangle	17 x 3.167"	1 - 3 83/497" wide	6" = ~1/4 yds
	4 Rectangle(s)	2 - 3 1/6" x 8 1/2" rectangle 2 - 4 1/2" x 8 1/2" rectangle	17 x 3.167" 17 x 4.5"	1 - 3 83/497" wide 1 - 4 1/2" wide	10" = ~3/8 yds
	6 Unique(s)	6 - Undefined	0 x 0"	0 - 0" wide	

Border1 (For pieced border, add 10" to total length)



Yardage needed: seamless border length = 54" = ~1 1/2 yds

Border2 (For pieced border, add 10" to total length)



Yardage needed: seamless border length = 56" = $\sim 1 \frac{5}{8}$ yds

Border3 (For pieced border, add 10" to total length)



Yardage needed: seamless border length = 62" = $\sim 1 \frac{3}{4}$ yds

Backing

Yardage needed: 109" = $\sim 3 \frac{1}{8}$ yds

Binding

2.5" Strips required: 6

Yardage needed: 15" = $\sim \frac{1}{2}$ yds

NOTE: Directional fabric may require an increase in the displayed fabric requirements.