

# *Glass Window 120x120*



@letalpiper20

Overall quilt size: 113.096" x 113.096"





## Blocks Used


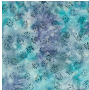
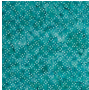



Solid - 85 blocks



Horiz Half - 28 blocks

## Block Info

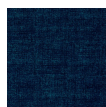
Fabric	Pieces used	Fabric to cut	Total length needed	40" strips needed	Total Yardage
	16 Square(s)	16 - 9 1/2" square	152 x 9.5"	4 - 9 1/2" wide	40" = ~1 1/8 yds
	24 Square(s)	24 - 9 1/2" square	228 x 9.5"	6 - 9 1/2" wide	59" = ~1 3/4 yds
	9 Square(s)	9 - 9 1/2" square	85.5 x 9.5"	3 - 9 1/2" wide	31" = ~7/8 yds
	28 Half-square Triangle(s) 36 Square(s)	14 - 11 7/8" square 36 - 9 1/2" square	166.25 x 11.875" 342 x 9.5"	5 - 11 7/8" wide 9 - 9 1/2" wide	147" = ~4 1/8 yds

## Sashing



Yardage needed: 2.5" strips" - quantity and length not determined

## Border1 (For pieced border, add 10" to total length)



Yardage needed: seamless border length = 117.096" = ~3 3/8 yds

## Backing

Yardage needed: 367" = ~10 1/4 yds

## Binding

2.5" Strips required: 12

Yardage needed: 30" =  $\sim 7/8$  yds

NOTE: Directional fabric may require an increase in the displayed fabric requirements.