

Hunter



@panda1mk

Overall quilt size: 56" x 66"

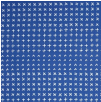

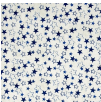



Blocks Used

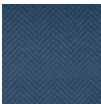


Solid - 30 blocks

Block Info

| Fabric | Pieces used | Fabric to cut | Total length needed | 40" strips needed | Total Yardage |
|--|-------------|--------------------|---------------------|-------------------|----------------|
|  | 8 Square(s) | 8 - 10 1/2" square | 84 x 10.5" | 3 - 10 1/2" wide | 34" = ~1 yds |
|  | 7 Square(s) | 7 - 10 1/2" square | 73.5 x 10.5" | 2 - 10 1/2" wide | 23" = ~3/4 yds |
|  | 7 Square(s) | 7 - 10 1/2" square | 73.5 x 10.5" | 2 - 10 1/2" wide | 23" = ~3/4 yds |
|  | 8 Square(s) | 8 - 10 1/2" square | 84 x 10.5" | 3 - 10 1/2" wide | 34" = ~1 yds |

Border1 (For pieced border, add 10" to total length)



Yardage needed: seamless border length = 70" = ~2 yds

Backing

Yardage needed: 119" = ~3 3/8 yds

Binding

2.5" Strips required: 7

Yardage needed: 17.5" = ~1/2 yds

NOTE: Directional fabric may require an increase in the displayed fabric requirements.