

Native Geo



@kennethreilley

Overall quilt size: 72" x 104"


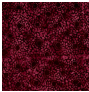


Blocks Used

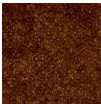


Half Square Triangle - 96 blocks

Block Info

Fabric	Pieces used	Fabric to cut	Total length needed	40" strips needed	Total Yardage
	96 Half-square Triangle(s)	48 - 8 7/8" square	426 x 8.875"	11 - 8 7/8" wide	100" = ~2 7/8 yds
	96 Half-square Triangle(s)	48 - 8 7/8" square	426 x 8.875"	11 - 8 7/8" wide	100" = ~2 7/8 yds

Border1 (For pieced border, add 10" to total length)



Yardage needed: seamless border length = 106" = ~3 yds

Border2 (For pieced border, add 10" to total length)



Yardage needed: seamless border length = 108" = ~3 yds

Backing

Yardage needed: 224" = ~6 1/4 yds

Binding

2.5" Strips required: 9

Yardage needed: 22.5" = ~5/8 yds

NOTE: Directional fabric may require an increase in the displayed fabric requirements.