

Americana

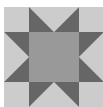


@seanandclancysmom

Overall quilt size: 52" x 52"



Blocks Used


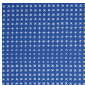
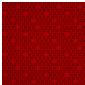



Sawtooth Star - 13 blocks

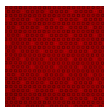


London Square- Right - 12 blocks

Block Info

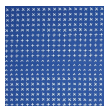
Fabric	Pieces used	Fabric to cut	Total length needed	40" strips needed	Total Yardage
	52 Square(s) 52 Quarter-square Triangle(s)	52 - 2 1/2" square 13 - 5 1/4" square	130 x 2.5" 68.25 x 5.25"	4 - 2 1/2" wide 2 - 5 1/4" wide	23" = ~3/4 yds
	13 Square(s)	13 - 4 1/2" square	58.5 x 4.5"	2 - 4 1/2" wide	11" = ~3/8 yds
	104 Half-square Triangle(s) 48 Square(s)	52 - 2 7/8" square 48 - 2 1/2" square	149.5 x 2.875" 120 x 2.5"	4 - 2 7/8" wide 3 - 2 1/2" wide	21" = ~5/8 yds
	48 Rectangle(s) 24 Square(s)	24 - 2 1/2" x 6 1/2" rectangle 24 - 2 1/2" x 4 1/2" rectangle 24 - 2 1/2" square	324 x 2.5"	9 - 2 1/2" wide	25" = ~3/4 yds

Border1 (For pieced border, add 10" to total length)



Yardage needed: seamless border length = 46" = ~1 3/8 yds

Border2 (For pieced border, add 10" to total length)



Yardage needed: seamless border length = 56" = ~1 5/8 yds

Backing

Yardage needed: 90" = ~2 1/2 yds

Binding

2.5" Strips required: 6

Yardage needed: 15" = ~1/2 yds

NOTE: Directional fabric may require an increase in the displayed fabric requirements.