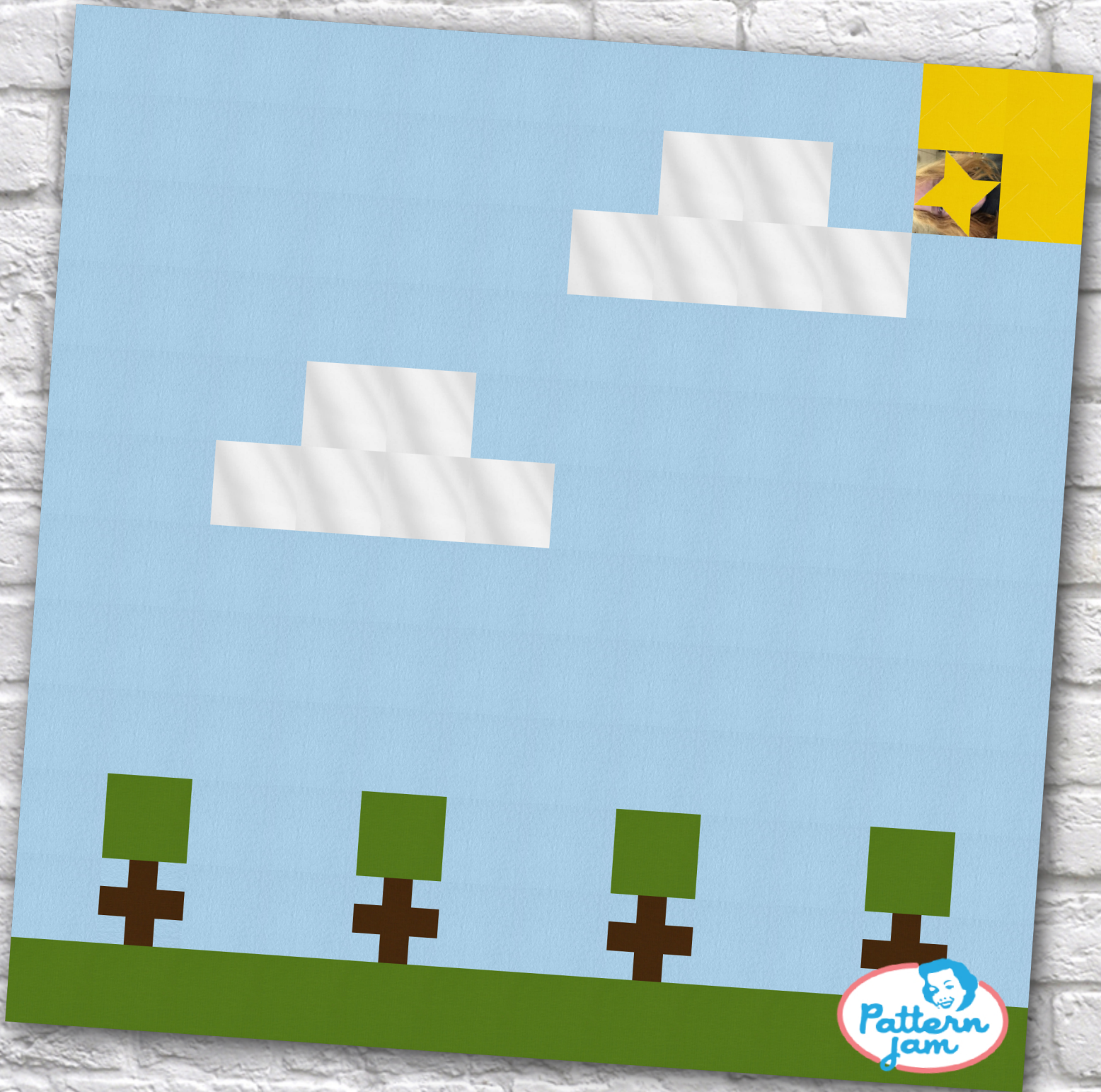


World



@phoenix8685

Overall quilt size: 144" x 144"



Blocks Used



Solid - 136 blocks

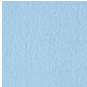






Friendship Star - 4 blocks



Plus - 4 blocks

Block Info

Fabric	Pieces used	Fabric to cut	Total length needed	40" strips needed	Total Yardage
	124 Square(s)	108 - 12 1/2" square 16 - 4 1/2" square	1350 x 12.5" 72 x 4.5"	34 - 12 1/2" wide 2 - 4 1/2" wide	436" = ~12 1/8 yds
	20 Square(s) 32 Half-square Triangle(s)	20 - 4 1/2" square 16 - 4 7/8" square	90 x 4.5" 78 x 4.875"	3 - 4 1/2" wide 2 - 4 7/8" wide	26" = ~3/4 yds
	12 Square(s)	12 - 12 1/2" square	150 x 12.5"	4 - 12 1/2" wide	52" = ~1 1/2 yds
	16 Square(s)	16 - 12 1/2" square	200 x 12.5"	5 - 12 1/2" wide	65" = ~1 7/8 yds
	8 Square(s) 4 Rectangle(s)	8 - 4 1/2" square 4 - 4 1/2" x 12 1/2" rectangle	86 x 4.5"	3 - 4 1/2" wide	16" = ~1/2 yds

Backing

Yardage needed: 578" = ~16 1/8 yds

Binding

2.5" Strips required: 15

Yardage needed: 37.5" = ~1 1/8 yds

NOTE: Directional fabric may require an increase in the displayed fabric requirements.

