

# DarkBorderStar



@jsheppard17

Overall quilt size: 61" x 100"





## Blocks Used









Block in a Box - 14 blocks

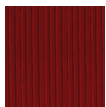


Hourglass - 14 blocks

## Block Info

Fabric	Pieces used	Fabric to cut	Total length needed	40" strips needed	Total Yardage
	28 Rectangle(s) 28 Square(s)	28 - 4 1/2" x 12 1/2" rectangle 28 - 4 1/2" square	476 x 4.5"	12 - 4 1/2" wide	56" = ~1 5/8 yds
	10 Square(s)	10 - 4 1/2" square	45 x 4.5"	2 - 4 1/2" wide	11" = ~3/8 yds
	28 Quarter-square Triangle(s)	7 - 13 1/4" square	92.75 x 13.25"	3 - 13 1/4" wide	42" = ~1 1/4 yds
	16 Quarter-square Triangle(s)	4 - 13 1/4" square	53 x 13.25"	2 - 13 1/4" wide	29" = ~7/8 yds
	12 Quarter-square Triangle(s)	3 - 13 1/4" square	39.75 x 13.25"	1 - 13 1/4" wide	16" = ~1/2 yds
	4 Square(s)	4 - 4 1/2" square	18 x 4.5"	1 - 4 1/2" wide	7" = ~1/4 yds

## Sashing



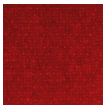
Yardage needed: 23 - 1.5" strips = 34.5" = ~1 yds

## Border1 (For pieced border, add 10" to total length)



Yardage needed: seamless border length = 102" = ~2 7/8 yds

Border2 (For pieced border, add 10" to total length)



Yardage needed: seamless border length = 104" = ~3 yds

## Backing

Yardage needed: 187" = ~5 1/4 yds

## Binding

2.5" Strips required: 9

Yardage needed: 22.5" = ~5/8 yds

NOTE: Directional fabric may require an increase in the displayed fabric requirements.