

Bees Knees



@amylill

Overall quilt size: 38" x 44"



Blocks Used






Solid - 15 blocks

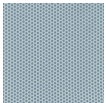


Four Patch - 15 blocks

Block Info

Fabric	Pieces used	Fabric to cut	Total length needed	40" strips needed	Total Yardage
	15 Square(s)	15 - 6 1/2" square	97.5 x 6.5"	3 - 6 1/2" wide	22" = ~5/8 yds
	30 Square(s)	30 - 3 1/2" square	105 x 3.5"	3 - 3 1/2" wide	13" = ~3/8 yds
	30 Square(s)	30 - 3 1/2" square	105 x 3.5"	3 - 3 1/2" wide	13" = ~3/8 yds

Border1 (For pieced border, add 10" to total length)



Yardage needed: seamless border length = 42" = ~1 1/4 yds

Border2 (For pieced border, add 10" to total length)



Yardage needed: seamless border length = 48" = ~1 3/8 yds

Backing

Yardage needed: 60" = ~1 3/4 yds

Binding

2.5" Strips required: 5

Yardage needed: 12.5" = ~3/8 yds

NOTE: Directional fabric may require an increase in the displayed fabric requirements.