

3

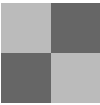


@sfwoody42

Overall quilt size: 72" x 92"





Blocks Used



Four Patch - 48 blocks

Block Info

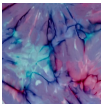
Fabric	Pieces used	Fabric to cut	Total length needed	40" strips needed	Total Yardage
	96 Square(s)	96 - 5 1/2" square	528 x 5.5"	14 - 5 1/2" wide	79" = ~2 1/4 yds
	96 Square(s)	96 - 5 1/2" square	528 x 5.5"	14 - 5 1/2" wide	79" = ~2 1/4 yds

Border1 (For pieced border, add 10" to total length)



Yardage needed: seamless border length = 88" = ~2 1/2 yds

Border2 (For pieced border, add 10" to total length)



Yardage needed: seamless border length = 96" = ~2 3/4 yds

Backing

Yardage needed: 200" = ~5 5/8 yds

Binding

2.5" Strips required: 9

Yardage needed: 22.5" = ~5/8 yds

NOTE: Directional fabric may require an increase in the displayed fabric requirements.