

Lauren Softened



@traceesue

Overall quilt size: 44" x 62"



Blocks Used



Half Square Triangle - 12 blocks



Hourglass - 12 blocks

Block Info

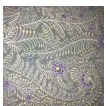
Fabric	Pieces used	Fabric to cut	Total length needed	40" strips needed	Total Yardage
	12 Half-square Triangle(s)	6 - 9 7/8" square	59.25 x 9.875"	2 - 9 7/8" wide	22" = ~5/8 yds
	12 Half-square Triangle(s)	6 - 9 7/8" square	59.25 x 9.875"	2 - 9 7/8" wide	22" = ~5/8 yds
	24 Quarter-square Triangle(s)	6 - 10 1/4" square	61.5 x 10.25"	2 - 10 1/4" wide	23" = ~3/4 yds
	24 Quarter-square Triangle(s)	6 - 10 1/4" square	61.5 x 10.25"	2 - 10 1/4" wide	23" = ~3/4 yds

Sashing



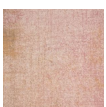
Yardage needed: 17 - 2.5" strips = 42.5" = ~1 1/4 yds

Border1 (For pieced border, add 10" to total length)



Yardage needed: seamless border length = 64" = ~1 7/8 yds

Border2 (For pieced border, add 10" to total length)



Yardage needed: seamless border length = 66" = ~1 7/8 yds

Backing

Yardage needed: 91" = ~2 5/8 yds

Binding

2.5" Strips required: 6

Yardage needed: 15" = ~1/2 yds

NOTE: Directional fabric may require an increase in the displayed fabric requirements.