

Sunflowers



@kfbowden

Overall quilt size: 41" x 56"



Blocks Used



Nine Patch - 12 blocks



Solid - 116 blocks

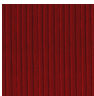
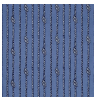



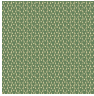


Half Square Triangle - 42 blocks

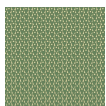


Half Square Triangle - 6 blocks

Block Info

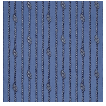
Fabric	Pieces used	Fabric to cut	Total length needed	40" strips needed	Total Yardage
	68 Square(s) 16 Half-square Triangle(s)	60 - 1 1/2" square 8 - 3 1/2" square 9 - 3 7/8" square	90 x 1.5" 28 x 3.5" 34.875 x 3.875"	3 - 1 1/2" wide 1 - 3 1/2" wide 1 - 3 7/8" wide	14" = ~1/2 yds
	56 Square(s) 16 Half-square Triangle(s)	48 - 1 1/2" square 8 - 3 1/2" square 8 - 3 7/8" square	72 x 1.5" 28 x 3.5" 31 x 3.875"	2 - 1 1/2" wide 1 - 3 1/2" wide 1 - 3 7/8" wide	13" = ~3/8 yds
	68 Square(s)	68 - 3 1/2" square	238 x 3.5"	6 - 3 1/2" wide	23" = ~3/4 yds
	48 Half-square Triangle(s)	26 - 3 7/8" square	100.75 x 3.875"	3 - 3 7/8" wide	14" = ~1/2 yds
	24 Square(s)	24 - 3 1/2" square	84 x 3.5"	3 - 3 1/2" wide	13" = ~3/8 yds
	8 Square(s) 16 Half-square Triangle(s)	8 - 3 1/2" square 9 - 3 7/8" square	28 x 3.5" 34.875 x 3.875"	1 - 3 1/2" wide 1 - 3 7/8" wide	10" = ~3/8 yds

Border1 (For pieced border, add 10" to total length)



Yardage needed: seamless border length = 54" = ~1 1/2 yds

Border2 (For pieced border, add 10" to total length)



Yardage needed: seamless border length = 60" = ~1 3/4 yds

Backing

Yardage needed: 79" = ~2 1/4 yds

Binding

2.5" Strips required: 5

Yardage needed: 12.5" = ~3/8 yds

NOTE: Directional fabric may require an increase in the displayed fabric requirements.