

My Room



@gilpenh

Overall quilt size: 102" x 102"



Blocks Used



Solid - 16 blocks


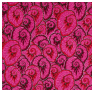


Half Square Triangle - 35 blocks

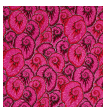


Half Square Triangle - 13 blocks

Block Info

Fabric	Pieces used	Fabric to cut	Total length needed	40" strips needed	Total Yardage needed
	16 Square(s) 32 Half-square Triangle(s)	16 - 9 1/2" square 17 - 9 7/8" square	152 x 9.5" 167.875 x 9.875"	4 - 9 1/2" wide 5 - 9 7/8" wide	90" = ~2 1/2 yds
	32 Half-square Triangle(s)	17 - 9 7/8" square	167.875 x 9.875"	5 - 9 7/8" wide	52" = ~1 1/2 yds
	32 Half-square Triangle(s)	18 - 9 7/8" square	177.75 x 9.875"	5 - 9 7/8" wide	52" = ~1 1/2 yds

Border1 (For pieced border, add 10" to total length)



Yardage needed: seamless border length = 84" = ~2 3/8 yds

Border2 (For pieced border, add 10" to total length)



Yardage needed: seamless border length = 94" = ~2 5/8 yds

Border3 (For pieced border, add 10" to total length)



Yardage needed: seamless border length = 106" = ~3 yds

Backing

Yardage needed: 303" = ~8 1/2 yds

Binding

2.5" Strips required: 11

Yardage needed: 27.5" = ~7/8 yds

NOTE: Directional fabric may require an increase in the displayed fabric requirements.