

Deer Panel



@grace2882

Overall quilt size: 66" x 84"



Blocks Used



London Square- Left - 46 blocks



London Square- Right - 28 blocks

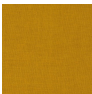
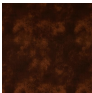


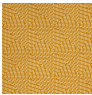



Solid - 34 blocks

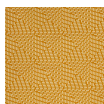


Slanted Diamonds - 22 blocks

Block Info

Fabric	Pieces used	Fabric to cut	Total length needed	40" strips needed	Total Yardage needed
	148 Rectangle(s) 78 Square(s)	74 - 2 x 5" 74 - 2 x 3 1/2" 74 - 2" square 4 - 6 1/2" square	777 x 2" 26 x 6.5"	20 - 2" wide 1 - 6 1/2" wide	49" = ~1 3/8 yds
	296 Square(s) 132 Half-square Triangle(s)	296 - 2" square 66 - 2 7/8" square	592 x 2" 189.75 x 2.875"	15 - 2" wide 5 - 2 7/8" wide	47" = ~1 3/8 yds
	148 Rectangle(s) 74 Square(s)	74 - 2 x 5" 74 - 2 x 3 1/2" 74 - 2" square	777 x 2"	20 - 2" wide	42" = ~1 1/4 yds
	132 Half-square Triangle(s)	66 - 2 7/8" square	189.75 x 2.875"	5 - 2 7/8" wide	17" = ~1/2 yds
	132 Half-square Triangle(s)	66 - 2 7/8" square	189.75 x 2.875"	5 - 2 7/8" wide	17" = ~1/2 yds
	30 Square(s)	30 - 6 1/2" square	195 x 6.5"	5 - 6 1/2" wide	35" = ~1 yds

Border1 (For pieced border, add 10" to total length)



Yardage needed: seamless border length = 88" = ~2 1/2 yds

Backing

Yardage needed: 171" = ~4 3/4 yds

Binding

2.5" Strips required: 8

Yardage needed: 20" = ~5/8 yds

NOTE: Directional fabric may require an increase in the displayed fabric requirements.