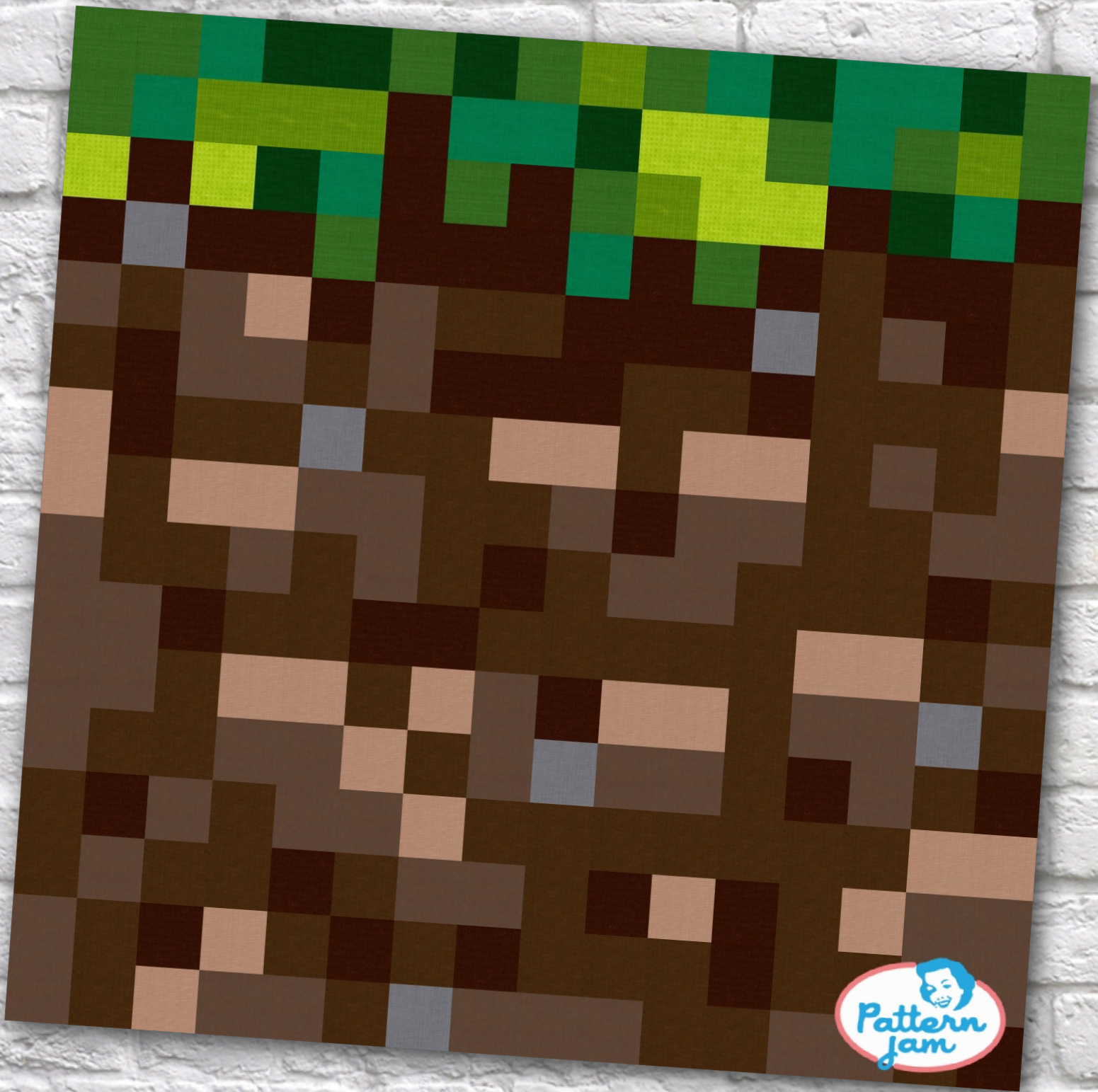


# Grass Block



@garrettbaileyk

Overall quilt size: 64" x 64"



## Blocks Used



Solid - 256 blocks

## Block Info

| Fabric | Pieces used  | Fabric to cut      | Total length needed | 40" strips needed | Total Yardage    |
|--------|--------------|--------------------|---------------------|-------------------|------------------|
|        | 14 Square(s) | 14 - 4 1/2" square | 63 x 4.5"           | 2 - 4 1/2" wide   | 11" = ~3/8 yds   |
|        | 11 Square(s) | 11 - 4 1/2" square | 49.5 x 4.5"         | 2 - 4 1/2" wide   | 11" = ~3/8 yds   |
|        | 8 Square(s)  | 8 - 4 1/2" square  | 36 x 4.5"           | 1 - 4 1/2" wide   | 7" = ~1/4 yds    |
|        | 6 Square(s)  | 6 - 4 1/2" square  | 27 x 4.5"           | 1 - 4 1/2" wide   | 7" = ~1/4 yds    |
|        | 45 Square(s) | 45 - 4 1/2" square | 202.5 x 4.5"        | 6 - 4 1/2" wide   | 29" = ~7/8 yds   |
|        | 6 Square(s)  | 6 - 4 1/2" square  | 27 x 4.5"           | 1 - 4 1/2" wide   | 7" = ~1/4 yds    |
|        | 6 Square(s)  | 6 - 4 1/2" square  | 27 x 4.5"           | 1 - 4 1/2" wide   | 7" = ~1/4 yds    |
|        | 80 Square(s) | 80 - 4 1/2" square | 360 x 4.5"          | 9 - 4 1/2" wide   | 43" = ~1 1/4 yds |
|        | 55 Square(s) | 55 - 4 1/2" square | 247.5 x 4.5"        | 7 - 4 1/2" wide   | 34" = ~1 yds     |
|        | 25 Square(s) | 25 - 4 1/2" square | 112.5 x 4.5"        | 3 - 4 1/2" wide   | 16" = ~1/2 yds   |

## Backing

Yardage needed: 130" = ~3 5/8 yds

## Binding

2.5" Strips required: 7

Yardage needed: 17.5" = ~1/2 yds

NOTE: Directional fabric may require an increase in the displayed fabric requirements.