

# Snow Swirls



@sandrastrachan

Overall quilt size: 96" x 110"



Blocks Used



Sawtooth Star II - 5 blocks



Ohio Star - 4 blocks



Sawtooth Star - 5 blocks



West Virginia Square - 3 blocks



Friendship Star - 3 blocks



Electric Fan - 3 blocks



Shoo Fly - 3 blocks



Flying Geese - 2 blocks



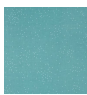
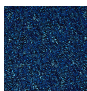
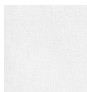



Indian Star - 2 blocks


Block Info

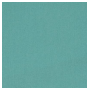
Fabric	Pieces used	Fabric to cut	Total length needed	40" strips needed	Total Yardage
--------	-------------	---------------	---------------------	-------------------	---------------



	32 Quarter-square Triangle(s)	5 - 4 1/4" square	21.25 x 4.25" 0 x 0"	1 - 4 1/4" wide 0 - 0" wide	39" = ~1 1/8 yds
	3 Unique(s)	3 - Undefined	58.5 x 4.875"	2 - 4 7/8" wide	
	36 Half-square Triangle(s)	12 - 4 7/8" square	13.5 x 4.5"	1 - 4 1/2" wide	
	3 Square(s)	3 - 4 1/2" square	21.75 x 7.25"	1 - 7 1/4" wide	
		3 - 4 1/2" square	15.5 x 3.875"	1 - 3 7/8" wide	
		3 - 7 1/4" square	13.75 x 6.875"	1 - 6 7/8" wide	
		4 - 3 7/8" square			
		2 - 6 7/8" square			
	20 Quarter-square Triangle(s)	5 - 4 1/4" square	21.25 x 4.25" 75.625 x 6.875"	1 - 4 1/4" wide 2 - 6 7/8" wide	36" = ~1 yds
	22 Half-square Triangle(s)	11 - 6 7/8" square	72 x 4.5"	2 - 4 1/2" wide	
	20 Square(s)	16 - 4 1/2" square	26 x 6.5"	1 - 6 1/2" wide	
		4 - 6 1/2" square			
	4 Square(s)	4 - 6 1/2" square	26 x 6.5"	1 - 6 1/2" wide	20" = ~5/8 yds
	32 Quarter-square Triangle(s)	8 - 4 1/4" square	34 x 4.25"	1 - 4 1/4" wide	
	2 Half-square Triangle(s)	1 - 6 7/8" square	6.875 x 6.875"	1 - 6 7/8" wide	
	64 Quarter-square Triangle(s)	8 - 5 1/4" square	42 x 5.25" 124 x 3.875"	2 - 5 1/4" wide 4 - 3 7/8" wide	46" = ~1 3/8 yds
	64 Half-square Triangle(s)	32 - 3 7/8" square	0 x 0"	0 - 0" wide	
	3 Unique(s)	3 - Undefined	58 x 7.25"	2 - 7 1/4" wide	
	4 Square(s)	8 - 7 1/4" square	14 x 3.5"	1 - 3 1/2" wide	
		4 - 3 1/2" square			
	28 Quarter-square Triangle(s)	6 - 5 1/4" square	31.5 x 5.25" 108 x 4.5"	1 - 5 1/4" wide 3 - 4 1/2" wide	40" = ~1 1/8 yds
	40 Square(s)	24 - 4 1/2" square	0 x 0"	0 - 0" wide	
	3 Unique(s)	3 - Undefined	29.25 x 4.875"	1 - 4 7/8" wide	
	12 Half-square Triangle(s)	6 - 4 7/8" square	56 x 3.5" 7.25 x 7.25"	2 - 3 1/2" wide 1 - 7 1/4" wide	
		16 - 3 1/2" square			
		1 - 7 1/4" square			

	21 Square(s)	16 - 3 1/2"	56 x 3.5"	2 - 3 1/2" wide	44" = ~1 1/4 yds
	24 Quarter-square Triangle(s)	square	29 x 7.25"	1 - 7 1/4" wide	
		4 - 7 1/4"	6.5 x 6.5"	1 - 6 1/2" wide	
	20 Half-square Triangle(s)	square	13.75 x 6.875"	1 - 6 7/8" wide	
		1 - 6 1/2"	31 x 3.875"	1 - 3 7/8" wide	
		square	10.5 x 5.25"	1 - 5 1/4" wide	
		2 - 6 7/8"	18 x 4.5"	1 - 4 1/2" wide	
		square			
		8 - 3 7/8"			
		square			
		2 - 5 1/4"			
		square			
		4 - 4 1/2"			
		square			

	12 Quarter-square Triangle(s)	3 - 7 1/4"	21.75 x 7.25"	1 - 7 1/4" wide	17" = ~1/2 yds
		square	6.875 x 6.875"	1 - 6 7/8" wide	
	2 Half-square Triangle(s)	1 - 6 7/8"			
		square			

	14 Half-square Triangle(s)	6 - 4 7/8"	29.25 x 4.875"	1 - 4 7/8" wide	29" = ~7/8 yds
	4 Square(s)	square	13.5 x 4.5"	1 - 4 1/2" wide	
	8 Quarter-square Triangle(s)	3 - 4 1/2"	6.5 x 6.5"	1 - 6 1/2" wide	
		square	8.5 x 4.25"	1 - 4 1/4" wide	
		1 - 6 1/2"	6.875 x 6.875"	1 - 6 7/8" wide	
		square			
		2 - 4 1/4"			
		square			
		1 - 6 7/8"			
		square			

## Sashing



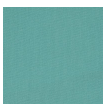
Yardage needed: 26 - 2.5" strips = 65" = ~1 7/8 yds

## Border1 (For pieced border, add 10" to total length)



Yardage needed: seamless border length = 94" = ~2 5/8 yds

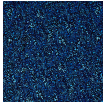
## Border2 (For pieced border, add 10" to total length)





Yardage needed: seamless border length = 102" = ~2 7/8 yds

### Border3 (For pieced border, add 10" to total length)



Yardage needed: seamless border length = 114" = ~3 1/4 yds

### Backing

Yardage needed: 307" = ~8 5/8 yds

### Binding

2.5" Strips required: 11

Yardage needed: 27.5" = ~7/8 yds

NOTE: Directional fabric may require an increase in the displayed fabric requirements.