

Little Pinwheel



@crittendenm

Overall quilt size: 98" x 98"



Blocks Used



Pinwheel - 50 blocks

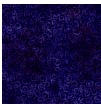


Solid - 50 blocks

Block Info

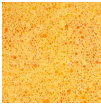
Fabric	Pieces used	Fabric to cut	Total length needed	40" strips needed	Total Yardage
	200 Half-square Triangle(s)	100 - 4 7/8" square	487.5 x 4.875"	13 - 4 7/8" wide	66" = ~1 7/8 yds
	200 Half-square Triangle(s)	100 - 4 7/8" square	487.5 x 4.875"	13 - 4 7/8" wide	66" = ~1 7/8 yds
	50 Square(s)	50 - 8 1/2" square	425 x 8.5"	11 - 8 1/2" wide	96" = ~2 3/4 yds

Border1 (For pieced border, add 10" to total length)



Yardage needed: seamless border length = 88" = ~2 1/2 yds

Border2 (For pieced border, add 10" to total length)



Yardage needed: seamless border length = 94" = ~2 5/8 yds

Border3 (For pieced border, add 10" to total length)



Yardage needed: seamless border length = 102" = ~2 7/8 yds

Backing

Yardage needed: 281" = $\sim 7 \frac{7}{8}$ yds

Binding

2.5" Strips required: 10

Yardage needed: 25" = $\sim \frac{3}{4}$ yds

NOTE: Directional fabric may require an increase in the displayed fabric requirements.