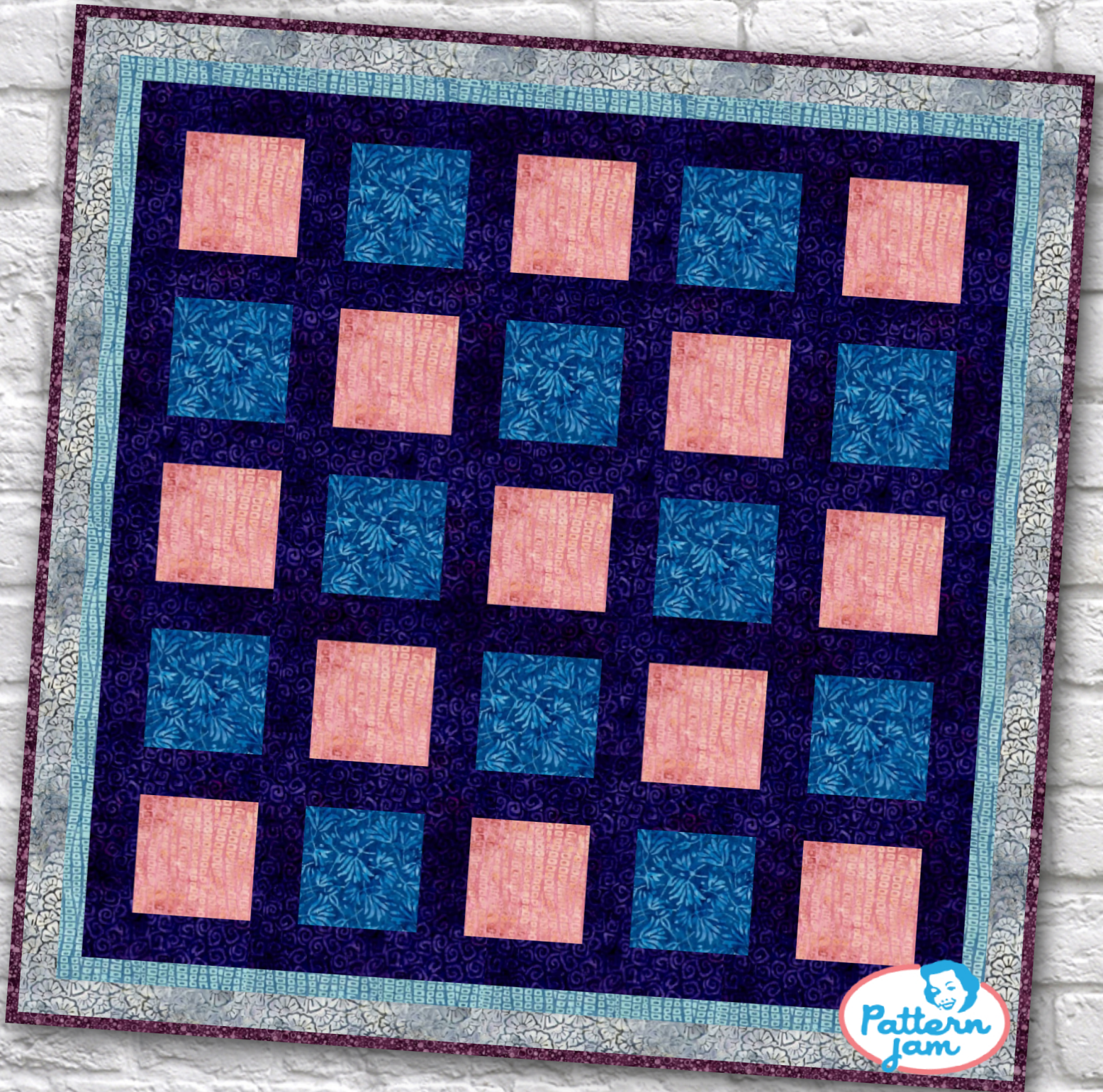


# Colorful Quilt Design



@madelyn6131

Overall quilt size: 66" x 66"







Blocks Used



Solid - 25 blocks

Block Info

Fabric	Pieces used	Fabric to cut	Total length needed	40" strips needed	Total Yardage
	13 Square(s)	13 - 6 1/2" square	84.5 x 6.5"	3 - 6 1/2" wide	22" = ~5/8 yds
	12 Square(s)	12 - 6 1/2" square	78 x 6.5"	2 - 6 1/2" wide	15" = ~1/2 yds

Sashing



Yardage needed: 14 - 4.5" strips = 63" = ~1 3/4 yds

Border1 (For pieced border, add 10" to total length)



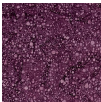
Yardage needed: seamless border length = 62" = ~1 3/4 yds

Border2 (For pieced border, add 10" to total length)



Yardage needed: seamless border length = 68" = ~2 yds

Border3 (For pieced border, add 10" to total length)



Yardage needed: seamless border length = 70" = ~2 yds

Backing

Yardage needed: 137" = ~3 7/8 yds

## Binding

2.5" Strips required: 7

Yardage needed: 17.5" = ~1/2 yds

NOTE: Directional fabric may require an increase in the displayed fabric requirements.