

Mums Throw



@donnamineo

Overall quilt size: 64" x 64"


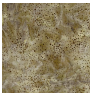


Blocks Used

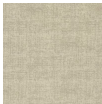


Half Square Triangle - 64 blocks

Block Info

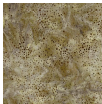
Fabric	Pieces used	Fabric to cut	Total length needed	40" strips needed	Total Yardage
	64 Half-square Triangle(s)	32 - 6 7/8" square	220 x 6.875"	6 - 6 7/8" wide	44" = ~1 1/4 yds
	64 Half-square Triangle(s)	32 - 6 7/8" square	220 x 6.875"	6 - 6 7/8" wide	44" = ~1 1/4 yds

Border1 (For pieced border, add 10" to total length)



Yardage needed: seamless border length = 56" = ~1 5/8 yds

Border2 (For pieced border, add 10" to total length)



Yardage needed: seamless border length = 68" = ~2 yds

Backing

Yardage needed: 130" = ~3 5/8 yds

Binding

2.5" Strips required: 7

Yardage needed: 17.5" = ~1/2 yds

NOTE: Directional fabric may require an increase in the displayed fabric requirements.