

*Kay Jeannie*



@grace2882

Overall quilt size: 62" x 62"



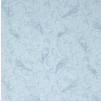

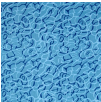


Blocks Used



Solid - 25 blocks

Block Info

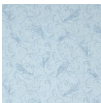
Fabric	Pieces used	Fabric to cut	Total length needed	40" strips needed	Total Yardage
	9 Square(s)	9 - 10 1/2" square	94.5 x 10.5"	3 - 10 1/2" wide	34" = ~1 yds
	8 Square(s)	8 - 10 1/2" square	84 x 10.5"	3 - 10 1/2" wide	34" = ~1 yds
	8 Square(s)	8 - 10 1/2" square	84 x 10.5"	3 - 10 1/2" wide	34" = ~1 yds

Border1 (For pieced border, add 10" to total length)



Yardage needed: seamless border length = 58" = ~1 5/8 yds

Border2 (For pieced border, add 10" to total length)



Yardage needed: seamless border length = 64" = ~1 7/8 yds

Border3 (For pieced border, add 10" to total length)



Yardage needed: seamless border length = 66" = ~1 7/8 yds

Backing

Yardage needed: 123" = ~3 1/2 yds

Binding

2.5" Strips required: 7

Yardage needed: 17.5" = ~1/2 yds

NOTE: Directional fabric may require an increase in the displayed fabric requirements.