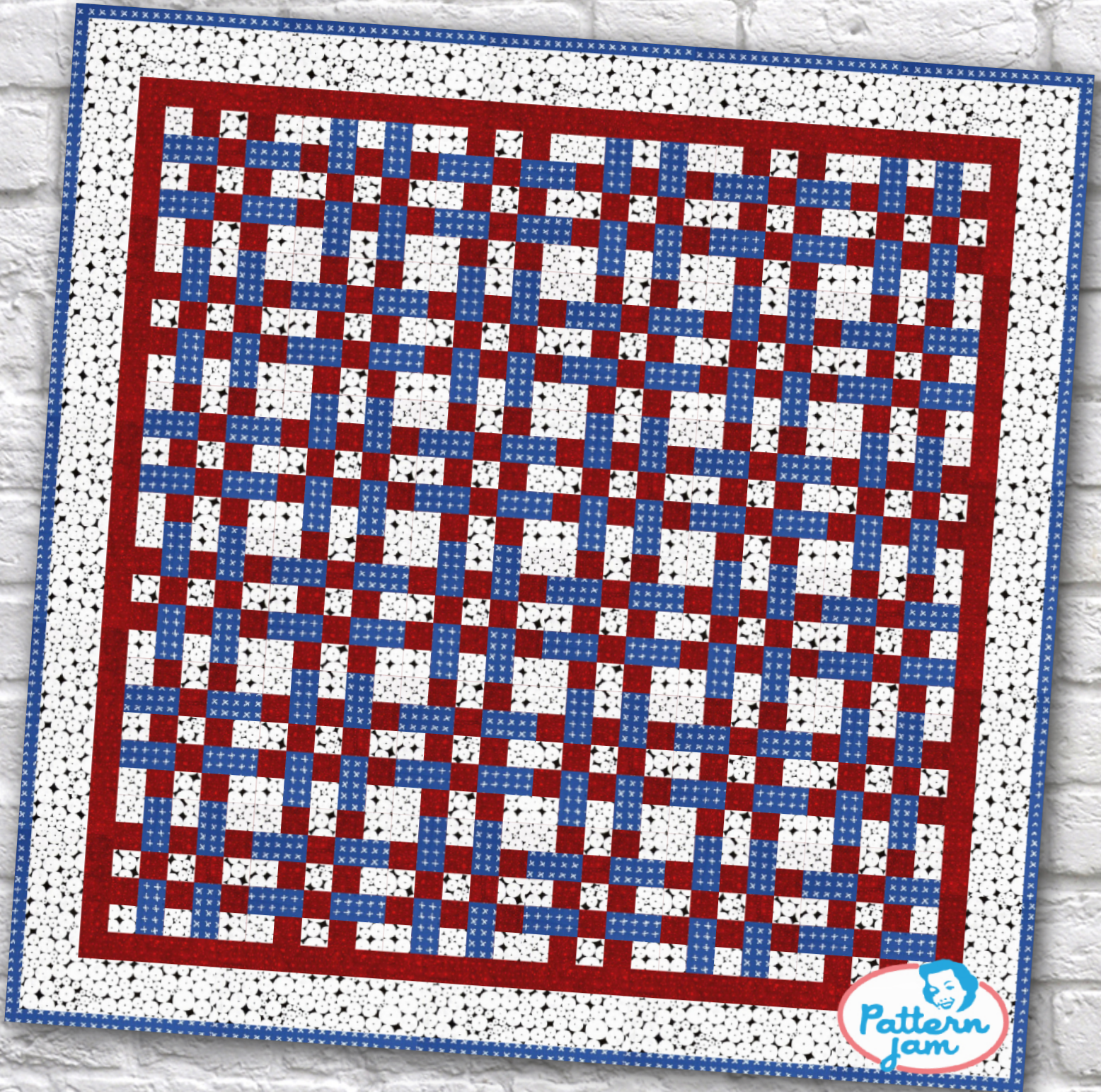


# Star Spangled



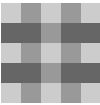
@sammielamblu47

Overall quilt size: 62" x 62"



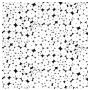
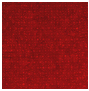



Blocks Used

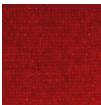


Plaid - 36 blocks

Block Info

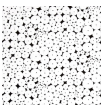
Fabric	Pieces used	Fabric to cut	Total length needed	40" strips needed	Total Yardage
	324 Square(s)	324 - 2 1/10" square	680.4 x 2.1"	18 - 2 1/10" wide	40" = ~1 1/8 yds
	288 Square(s)	288 - 2 1/10" square	604.8 x 2.1"	16 - 2 1/10" wide	36" = ~1 yds
	144 Rectangle(s)	144 - 2 1/10" x 3 7/10" rectangle	532.8 x 2.1"	14 - 2 1/10" wide	32" = ~1 yds

Border1 (For pieced border, add 10" to total length)



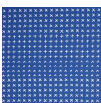
Yardage needed: seamless border length = 56" = ~1 5/8 yds

Border2 (For pieced border, add 10" to total length)



Yardage needed: seamless border length = 64" = ~1 7/8 yds

Border3 (For pieced border, add 10" to total length)



Yardage needed: seamless border length = 66" = ~1 7/8 yds

Backing

Yardage needed: 123" = ~3 1/2 yds

## Binding

2.5" Strips required: 7

Yardage needed: 17.5" = ~1/2 yds

NOTE: Directional fabric may require an increase in the displayed fabric requirements.