

Twisted Stars



@kyfishgirl

Overall quilt size: 40" x 67"



Blocks Used

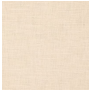

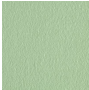
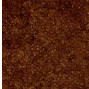


Half Square Triangle - 224 blocks

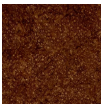


Solid - 28 blocks

Block Info

Fabric	Pieces used	Fabric to cut	Total length needed	40" strips needed	Total Yardage
	224 Half-square Triangle(s)	112 - 3 7/8" square	434 x 3.875"	11 - 3 7/8" wide	45" = ~1 1/4 yds
	168 Half-square Triangle(s)	84 - 3 7/8" square	325.5 x 3.875"	9 - 3 7/8" wide	37" = ~1 1/8 yds
	56 Half-square Triangle(s)	28 - 3 7/8" square	108.5 x 3.875"	3 - 3 7/8" wide	14" = ~1/2 yds
	28 Square(s)	28 - 3 1/2" square	98 x 3.5"	3 - 3 1/2" wide	13" = ~3/8 yds

Border1 (For pieced border, add 10" to total length)



Yardage needed: seamless border length = 71" = ~2 yds

Backing

Yardage needed: 90" = ~2 1/2 yds

Binding

2.5" Strips required: 6

Yardage needed: 15" = ~1/2 yds

NOTE: Directional fabric may require an increase in the displayed fabric requirements.

