

April



@ashleylynnwins

Overall quilt size: 68" x 80"



Blocks Used



Solid - 89 blocks



Friendship Star - 2 blocks



Four Patch - 32 blocks







Half Square Triangle - 11 blocks



Half Square Triangle - 9 blocks

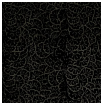
Block Info

Fabric	Pieces used	Fabric to cut	Total length needed	40" strips needed	Total Yardage
	148 Square(s) 28 Half-square Triangle(s)	76 - 6 1/2" square 8 - 2 1/2" square 4 - 2 7/8" square 64 - 3 1/2" square 11 - 6 7/8" square	494 x 6.5" 20 x 2.5" 11.5 x 2.875" 224 x 3.5" 75.625 x 6.875"	13 - 6 1/2" wide 1 - 2 1/2" wide 1 - 2 7/8" wide 6 - 3 1/2" wide 2 - 6 7/8" wide	127" = ~3 5/8 yds
	10 Square(s) 8 Half-square Triangle(s)	8 - 6 1/2" square 4 - 2 7/8" square 2 - 2 1/2" square	52 x 6.5" 11.5 x 2.875" 5 x 2.5"	2 - 6 1/2" wide 1 - 2 7/8" wide 1 - 2 1/2" wide	21" = ~5/8 yds
	64 Square(s)	64 - 3 1/2" square	224 x 3.5"	6 - 3 1/2" wide	23" = ~3/4 yds
	12 Half-square Triangle(s) 3 Square(s)	7 - 6 7/8" square 3 - 6 1/2" square	48.125 x 6.875" 19.5 x 6.5"	2 - 6 7/8" wide 1 - 6 1/2" wide	23" = ~3/4 yds



8 Half-square	4 - 6 7/8"	27.5 x 6.875"	1 - 6 7/8" wide	16" = ~1/2 yds
Triangle(s)	square	13 x 6.5"	1 - 6 1/2" wide	
2 Square(s)	2 - 6 1/2"			
	square			

Border1 (For pieced border, add 10" to total length)



Yardage needed: seamless border length = 84" = ~2 3/8 yds

Backing

Yardage needed: 168" = ~4 3/4 yds

Binding

2.5" Strips required: 8

Yardage needed: 20" = ~5/8 yds

NOTE: Directional fabric may require an increase in the displayed fabric requirements.