

Hope



@iamway2crafty

Overall quilt size: 60" x 84"



Blocks Used




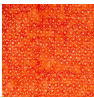

Solid - 76 blocks



Half Square Triangle - 20 blocks

Block Info

Fabric	Pieces used	Fabric to cut	Total length needed	40" strips needed	Total Yardage
	9 Square(s) 2 Half-square Triangle(s)	9 - 6 1/2" square 1 - 6 7/8" square	58.5 x 6.5" 6.875 x 6.875"	2 - 6 1/2" wide 1 - 6 7/8" wide	22" = ~5/8 yds
	9 Square(s) 2 Half-square Triangle(s)	9 - 6 1/2" square 1 - 6 7/8" square	58.5 x 6.5" 6.875 x 6.875"	2 - 6 1/2" wide 1 - 6 7/8" wide	22" = ~5/8 yds
	6 Square(s)	6 - 6 1/2" square	39 x 6.5"	1 - 6 1/2" wide	9" = ~1/4 yds
	10 Square(s)	10 - 6 1/2" square	65 x 6.5"	2 - 6 1/2" wide	15" = ~1/2 yds
	10 Square(s)	10 - 6 1/2" square	65 x 6.5"	2 - 6 1/2" wide	15" = ~1/2 yds
	4 Square(s)	4 - 6 1/2" square	26 x 6.5"	1 - 6 1/2" wide	9" = ~1/4 yds
	9 Square(s) 2 Half-square Triangle(s)	9 - 6 1/2" square 1 - 6 7/8" square	58.5 x 6.5" 6.875 x 6.875"	2 - 6 1/2" wide 1 - 6 7/8" wide	22" = ~5/8 yds
	9 Square(s) 2 Half-square Triangle(s)	9 - 6 1/2" square 1 - 6 7/8" square	58.5 x 6.5" 6.875 x 6.875"	2 - 6 1/2" wide 1 - 6 7/8" wide	22" = ~5/8 yds
	6 Square(s)	6 - 6 1/2" square	39 x 6.5"	1 - 6 1/2" wide	9" = ~1/4 yds
	20 Half-square Triangle(s) 4 Square(s)	10 - 6 7/8" square 4 - 6 1/2" square	68.75 x 6.875" 26 x 6.5"	2 - 6 7/8" wide 1 - 6 1/2" wide	23" = ~3/4 yds

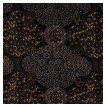
	8 Half-square Triangle(s)	4 - 6 7/8" square	27.5 x 6.875"	1 - 6 7/8" wide	9" = ~1/4 yds
	4 Half-square Triangle(s)	2 - 6 7/8" square	13.75 x 6.875"	1 - 6 7/8" wide	9" = ~1/4 yds

Border1 (For pieced border, add 10" to total length)



Yardage needed: seamless border length = 80" = ~2 1/4 yds

Border2 (For pieced border, add 10" to total length)



Yardage needed: seamless border length = 88" = ~2 1/2 yds

Backing

Yardage needed: 157" = ~4 3/8 yds

Binding

2.5" Strips required: 8

Yardage needed: 20" = ~5/8 yds

NOTE: Directional fabric may require an increase in the displayed fabric requirements.