

Christmas Test



@dina68

Overall quilt size: 101" x 101"



Blocks Used

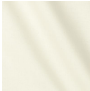
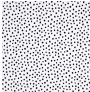




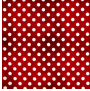




Solid - 36 blocks



Half Square Triangle - 64 blocks

Block Info

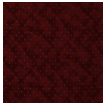
Fabric	Pieces used	Fabric to cut	Total length needed	40" strips needed	Total Yardage needed
	36 Square(s)	36 - 8 1/2" square	306 x 8.5"	8 - 8 1/2" wide	70" = ~2 yds
	1 Half-square Triangle(s)	1 - 8 7/8" square	8.875 x 8.875"	1 - 8 7/8" wide	11" = ~3/8 yds
	34 Half-square Triangle(s)	17 - 8 7/8" square	150.875 x 8.875"	4 - 8 7/8" wide	38" = ~1 1/8 yds
	8 Half-square Triangle(s)	4 - 8 7/8" square	35.5 x 8.875"	1 - 8 7/8" wide	11" = ~3/8 yds
	27 Half-square Triangle(s)	14 - 8 7/8" square	124.25 x 8.875"	4 - 8 7/8" wide	38" = ~1 1/8 yds
	8 Half-square Triangle(s)	4 - 8 7/8" square	35.5 x 8.875"	1 - 8 7/8" wide	11" = ~3/8 yds
	12 Half-square Triangle(s)	6 - 8 7/8" square	53.25 x 8.875"	2 - 8 7/8" wide	20" = ~5/8 yds
	10 Half-square Triangle(s)	5 - 8 7/8" square	44.375 x 8.875"	2 - 8 7/8" wide	20" = ~5/8 yds
	28 Half-square Triangle(s)	14 - 8 7/8" square	124.25 x 8.875"	4 - 8 7/8" wide	38" = ~1 1/8 yds

Sashing



Yardage needed: 53 - 1.5" strips = 79.5" = ~2 1/4 yds

Border1 (For pieced border, add 10" to total length)



Yardage needed: seamless border length = 105" = ~3 yds

Backing

Yardage needed: 298" = ~8 3/8 yds

Binding

2.5" Strips required: 11

Yardage needed: 27.5" = ~7/8 yds

NOTE: Directional fabric may require an increase in the displayed fabric requirements.