

Robyn's Super Simple Snowball



@tiffherb

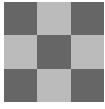
Overall quilt size: 38" x 47"



Blocks Used




Sawtooth Star II - 10 blocks

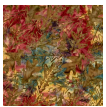


Nine Patch - 10 blocks

Block Info

Fabric	Pieces used	Fabric to cut	Total length needed	40" strips needed	Total Yardage
	40 Quarter-square Triangle(s) 40 Square(s)	50 - 3 1/2" square	175 x 3.5"	5 - 3 1/2" wide	20" = ~5/8 yds
	120 Quarter-square Triangle(s) 40 Half-square Triangle(s) 10 Square(s)	30 - 3 1/2" square 20 - 5 3/8" square 10 - 5" square	105 x 3.5" 107.5 x 5.375" 50 x 5"	3 - 3 1/2" wide 3 - 5 3/8" wide 2 - 5" wide	39" = ~1 1/8 yds
	50 Square(s)	50 - 3 1/2" square	175 x 3.5"	5 - 3 1/2" wide	20" = ~5/8 yds

Border1 (For pieced border, add 10" to total length)



Yardage needed: seamless border length = 51" = ~1 1/2 yds

Backing

Yardage needed: 64" = ~1 7/8 yds

Binding

2.5" Strips required: 5

Yardage needed: 12.5" = ~3/8 yds

NOTE: Directional fabric may require an increase in the displayed fabric requirements.

