

Buckeye Pride



@lahoffman79

Overall quilt size: 116" x 124"



Blocks Used



Solid - 253 blocks



Half Square Triangle - 41 blocks



Half Square Triangle - 39 blocks



Four Patch - 52 blocks



Vertical Rectangles - 42 blocks



Spool - 12 blocks

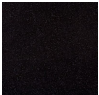





Horizontal Rectangles - 8 blocks



6 Stripe - 36 blocks

Block Info

Fabric	Pieces used	Fabric to cut	Total length needed	40" strips needed	Total Yardage
	124 Square(s)	44 - 4 1/2" square	198 x 4.5"	5 - 4 1/2" wide	71" = ~2 yds
	124 Rectangle(s)	80 - 2 1/2" square	380 x 2.5"	10 - 2 1/2"	
	112 Half-square Triangle(s)	40 - 2 1/2" x 4 1/2" rectangle	120 x 1.5"	wide	
		48 - 1 1/2" x 2 1/2" rectangle	90 x 1.875"	3 - 1 1/2" wide	
		48 - 1 7/8" square	162 x 1.167"	3 - 1 7/8" wide	
		36 - 1 1/6" x 4 1/2" rectangle	39 x 4.875"	5 - 1 83/97"	
		8 - 4 7/8" square		wide	
				1 - 4 7/8" wide	

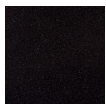
	79 Half-square Triangle(s) 24 Square(s) 36 Rectangle(s)	41 - 4 7/8" square 8 - 2 1/2" square 36 - 1 1/6" x 4 1/2" rectangle 16 - 4 1/2" square	199.875 x 4.875" 20 x 2.5" 162 x 1.167" 72 x 4.5"	5 - 4 7/8" wide 1 - 2 1/2" wide 5 - 1 83/497" wide 2 - 4 1/2" wide	44" = ~1 1/4 yds
	64 Half-square Triangle(s) 185 Square(s) 76 Rectangle(s)	33 - 4 7/8" square 177 - 4 1/2" square 72 - 1 1/6" x 4 1/2" rectangle 8 - 2 1/2" square 4 - 2 1/2" x 4 1/2" rectangle	160.875 x 4.875" 796.5 x 4.5" 324 x 1.167" 38 x 2.5"	5 - 4 7/8" wide 20 - 4 1/2" wide 9 - 1 83/497" wide 1 - 2 1/2" wide	130" = ~3 5/8 yds
	140 Square(s) 128 Rectangle(s) 1 Half-square Triangle(s)	124 - 2 1/2" square 56 - 2 1/2" x 4 1/2" rectangle 72 - 1 1/6" x 4 1/2" rectangle 16 - 4 1/2" square 1 - 4 7/8" square	562 x 2.5" 324 x 1.167" 72 x 4.5" 4.875 x 4.875"	15 - 2 1/2" wide 9 - 1 83/497" wide 2 - 4 1/2" wide 1 - 4 7/8" wide	64" = ~1 7/8 yds

Border1 (For pieced border, add 10" to total length)



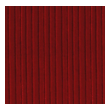
Yardage needed: seamless border length = 104" = ~3 yds

Border2 (For pieced border, add 10" to total length)



Yardage needed: seamless border length = 116" = ~3 1/4 yds

Border3 (For pieced border, add 10" to total length)



Yardage needed: seamless border length = 128" = ~3 5/8 yds

Backing

Yardage needed: 410" = ~11 1/2 yds

Binding

2.5" Strips required: 12

Yardage needed: 30" = $\sim 7/8$ yds

NOTE: Directional fabric may require an increase in the displayed fabric requirements.