

Bird Sashing



@hollym73e

Overall quilt size: 31" x 21"



Blocks Used



Solid - 13 blocks


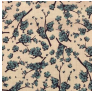



Half Square Triangle - 10 blocks

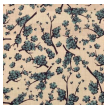


Hourglass - 1 blocks

Block Info

Fabric	Pieces used	Fabric to cut	Total length needed	40" strips needed	Total Yardage
	10 Square(s) 7 Half-square Triangle(s) 2 Quarter-square Triangle(s)	10 - 4 1/2" square 4 - 4 7/8" square 1 - 5 1/4" square	45 x 4.5" 19.5 x 4.875" 5.25 x 5.25"	2 - 4 1/2" wide 1 - 4 7/8" wide 1 - 5 1/4" wide	22" = ~5/8 yds
	13 Half-square Triangle(s) 3 Square(s)	7 - 4 7/8" square 3 - 4 1/2" square	34.125 x 4.875" 13.5 x 4.5"	1 - 4 7/8" wide 1 - 4 1/2" wide	12" = ~3/8 yds
	2 Quarter-square Triangle(s)	1 - 5 1/4" square	5.25 x 5.25"	1 - 5 1/4" wide	8" = ~1/4 yds

Sashing



Yardage needed: 9 - 1.5" strips = 13.5" = ~3/8 yds

Backing

Yardage needed: 29" = ~7/8 yds

Binding

2.5" Strips required: 3

Yardage needed: 7.5" = ~1/4 yds

NOTE: Directional fabric may require an increase in the displayed fabric requirements.