

ROSES



@lynngranado61

Overall quilt size: 83" x 98"



Blocks Used



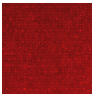


Nine Patch - 10 blocks



Shoo Fly - 10 blocks

Block Info

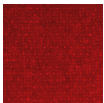
Fabric	Pieces used	Fabric to cut	Total length needed	40" strips needed	Total Yardage needed
	90 Square(s)	90 - 4 1/2" square	405 x 4.5"	11 - 4 1/2" wide	52" = ~1 1/2 yds
	40 Square(s) 40 Half-square Triangle(s)	40 - 4 1/2" square 20 - 4 7/8" square	180 x 4.5" 97.5 x 4.875"	5 - 4 1/2" wide 3 - 4 7/8" wide	40" = ~1 1/8 yds
	40 Half-square Triangle(s) 10 Square(s)	20 - 4 7/8" square 10 - 4 1/2" square	97.5 x 4.875" 45 x 4.5"	3 - 4 7/8" wide 2 - 4 1/2" wide	26" = ~3/4 yds

Sashing



Yardage needed: 20 - 3.5" strips = 70" = ~2 yds

Border1 (For pieced border, add 10" to total length)



Yardage needed: seamless border length = 88" = ~2 1/2 yds

Border2 (For pieced border, add 10" to total length)



Yardage needed: seamless border length = 94" = ~2 5/8 yds

Border3 (For pieced border, add 10" to total length)



Yardage needed: seamless border length = 102" = $\sim 2 \frac{7}{8}$ yds

Backing

Yardage needed: 242" = $\sim 6 \frac{3}{4}$ yds

Binding

2.5" Strips required: 10

Yardage needed: 25" = $\sim \frac{3}{4}$ yds

NOTE: Directional fabric may require an increase in the displayed fabric requirements.