

Mother Earth



@toneymiller

Overall quilt size: 100" x 100"



Blocks Used



Four Patch - 4 blocks



Vertical Rectangles - 56 blocks



Solid - 104 blocks








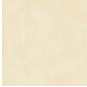
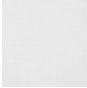

Half Square Triangle - 76 blocks



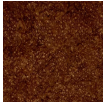
Hourglass - 16 blocks

Block Info

Fabric	Pieces used	Fabric to cut	Total length needed	40" strips needed	Total Yardage
	8 Square(s) 56 Rectangle(s) 4 Half-square Triangle(s)	4 - 3" square 56 - 3" x 5 1/2" rectangle 4 - 5 1/2" square 2 - 5 7/8" square	320 x 3" 22 x 5.5" 11.75 x 5.875"	8 - 3" wide 1 - 5 1/2" wide 1 - 5 7/8" wide	38" = ~1 1/8 yds
	12 Square(s) 56 Rectangle(s)	12 - 3" square 56 - 3" x 5 1/2" rectangle	344 x 3"	9 - 3" wide	29" = ~7/8 yds
	44 Square(s) 44 Half-square Triangle(s)	44 - 5 1/2" square 22 - 5 7/8" square	242 x 5.5" 129.25 x 5.875"	7 - 5 1/2" wide 4 - 5 7/8" wide	64" = ~1 7/8 yds
	28 Half-square Triangle(s) 20 Square(s) 32 Quarter-square Triangle(s)	14 - 5 7/8" square 20 - 5 1/2" square 8 - 6 1/4" square	82.25 x 5.875" 110 x 5.5" 50 x 6.25"	3 - 5 7/8" wide 3 - 5 1/2" wide 2 - 6 1/4" wide	49" = ~1 3/8 yds
	32 Quarter-square Triangle(s) 8 Half-square Triangle(s)	8 - 6 1/4" square 4 - 5 7/8" square	50 x 6.25" 23.5 x 5.875"	2 - 6 1/4" wide 1 - 5 7/8" wide	21" = ~5/8 yds

	40 Half-square Triangle(s) 24 Square(s)	20 - 5 7/8" square 24 - 5 1/2" square	117.5 x 5.875" 132 x 5.5"	3 - 5 7/8" wide 4 - 5 1/2" wide	42" = ~1 1/4 yds
	24 Half-square Triangle(s) 12 Square(s)	12 - 5 7/8" square 12 - 5 1/2" square	70.5 x 5.875" 66 x 5.5"	2 - 5 7/8" wide 2 - 5 1/2" wide	25" = ~3/4 yds
	4 Half-square Triangle(s)	2 - 5 7/8" square	11.75 x 5.875"	1 - 5 7/8" wide	8" = ~1/4 yds

Border1 (For pieced border, add 10" to total length)



Yardage needed: seamless border length = 94" = ~2 5/8 yds

Border2 (For pieced border, add 10" to total length)



Yardage needed: seamless border length = 104" = ~3 yds

Backing

Yardage needed: 292" = ~8 1/8 yds

Binding

2.5" Strips required: 10

Yardage needed: 25" = ~3/4 yds

NOTE: Directional fabric may require an increase in the displayed fabric requirements.