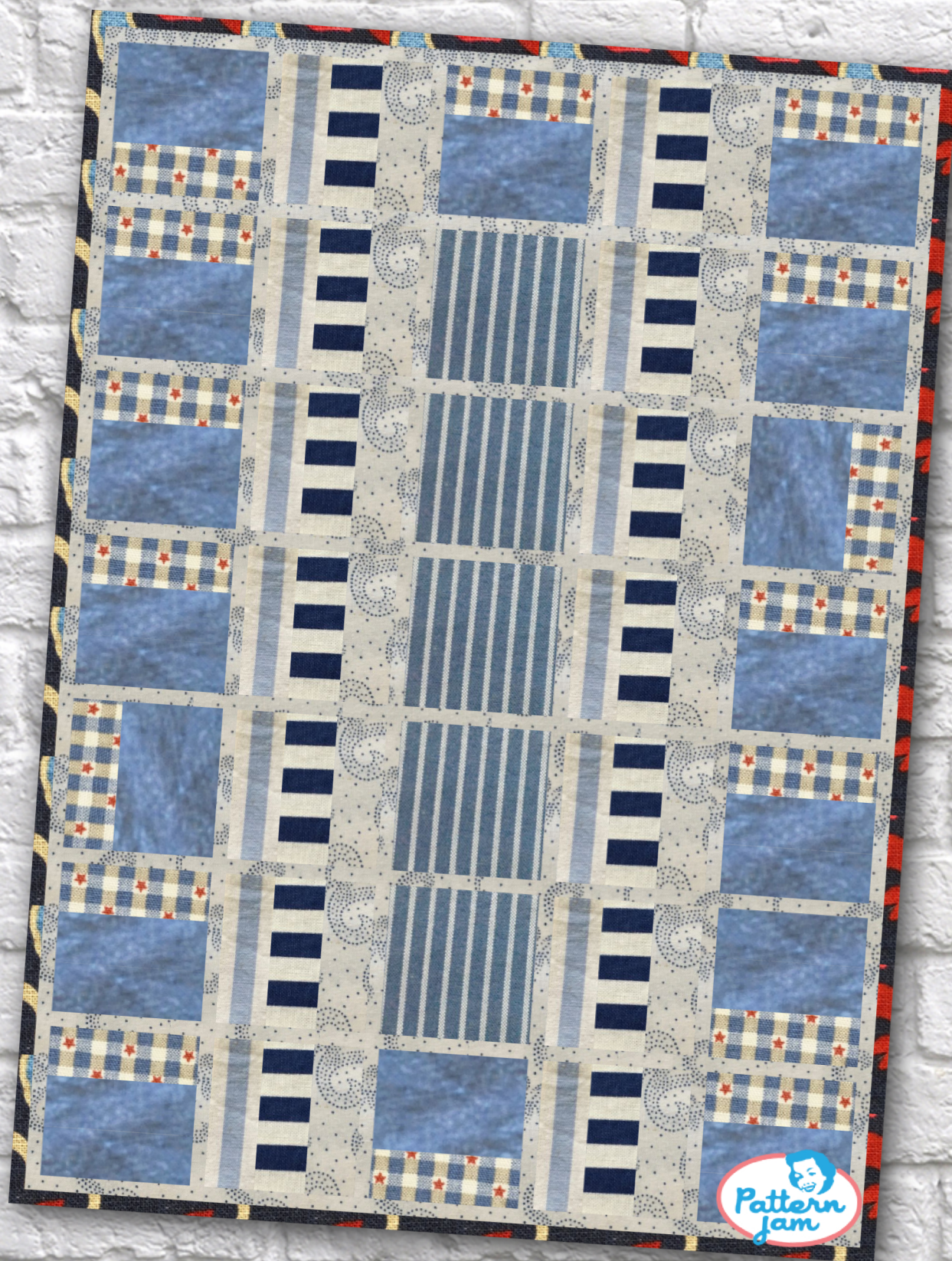


Gees Bend Inspo 3



@fieldalvarez

Overall quilt size: 68" x 94"



Blocks Used



Rail Fence Horizontal - 16 blocks









Rail Fence Vertical - 14 blocks



Solid - 5 blocks

Block Info

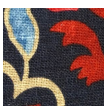
Fabric	Pieces used	Fabric to cut	Total length needed	40" strips needed	Total Yardage needed
	16 Rectangle(s)	16 - 4 1/2" x 12 1/2" rectangle	200 x 4.5"	5 - 4 1/2" wide	25" = ~3/4 yds
	32 Rectangle(s)	32 - 4 1/2" x 12 1/2" rectangle	400 x 4.5"	10 - 4 1/2" wide	47" = ~1 3/8 yds
	14 Rectangle(s)	14 - 4 1/2" x 12 1/2" rectangle	175 x 4.5"	5 - 4 1/2" wide	25" = ~3/4 yds
	14 Rectangle(s)	14 - 4 1/2" x 12 1/2" rectangle	175 x 4.5"	5 - 4 1/2" wide	25" = ~3/4 yds
	14 Rectangle(s)	14 - 4 1/2" x 12 1/2" rectangle	175 x 4.5"	5 - 4 1/2" wide	25" = ~3/4 yds
	5 Square(s)	5 - 12 1/2" square	62.5 x 12.5"	2 - 12 1/2" wide	27" = ~3/4 yds

Sashing



Yardage needed: 28 - 1.5" strips = 42" = ~1 1/4 yds

Border1 (For pieced border, add 10" to total length)



Yardage needed: seamless border length = 98" = $\sim 2 \frac{3}{4}$ yds

Backing

Yardage needed: 194" = $\sim 5 \frac{1}{2}$ yds

Binding

2.5" Strips required: 9

Yardage needed: 22.5" = $\sim 5/8$ yds

NOTE: Directional fabric may require an increase in the displayed fabric requirements.