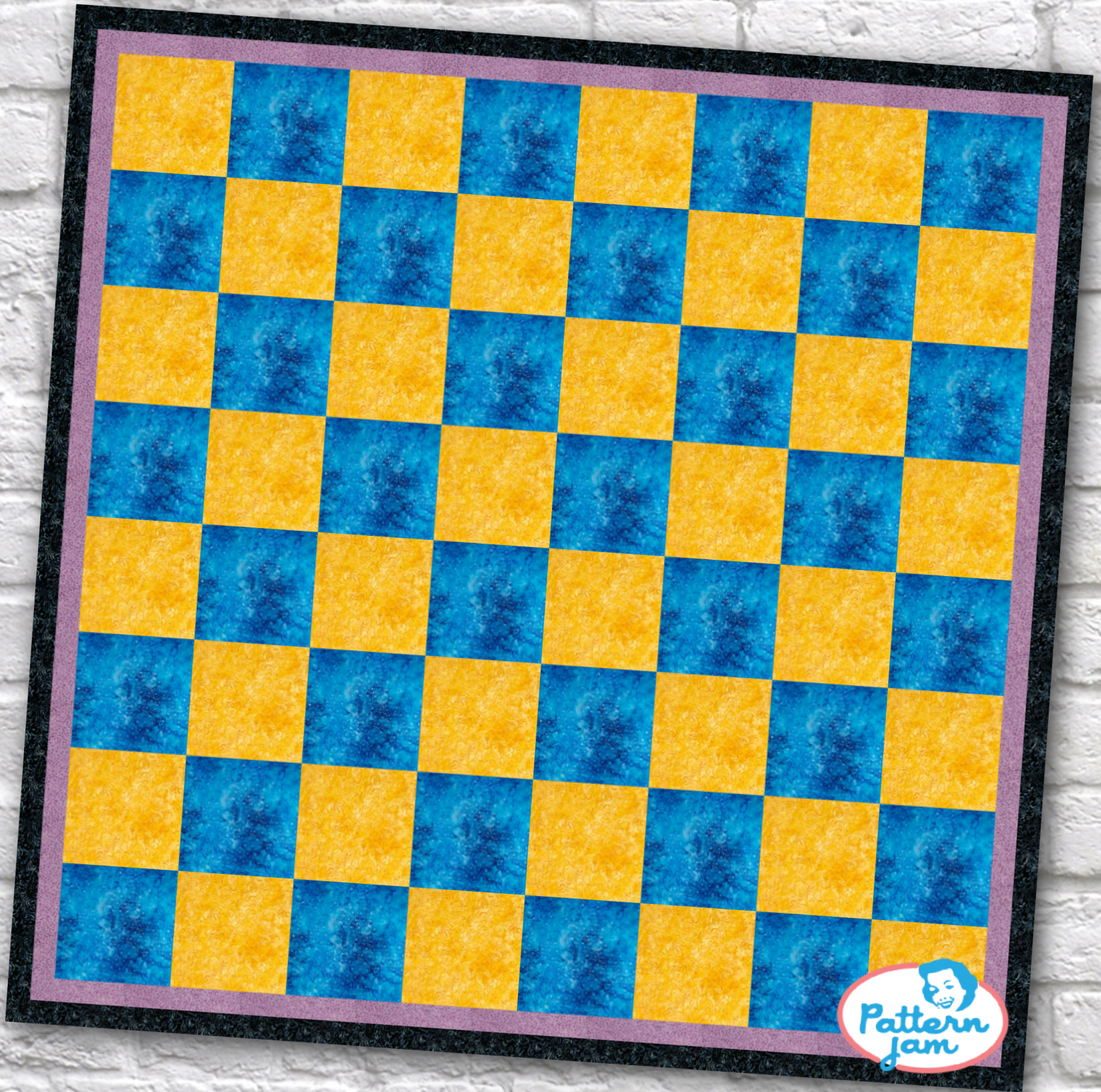


# Pattern 1



@olivia0918

Overall quilt size: 104" x 104"




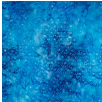


Blocks Used

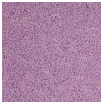


Solid - 64 blocks

Block Info

Fabric	Pieces used	Fabric to cut	Total length needed	40" strips needed	Total Yardage
	32 Square(s)	32 - 12 1/2" square	400 x 12.5"	10 - 12 1/2" wide	127" = ~3 5/8 yds
	32 Square(s)	32 - 12 1/2" square	400 x 12.5"	10 - 12 1/2" wide	127" = ~3 5/8 yds

Border1 (For pieced border, add 10" to total length)



Yardage needed: seamless border length = 104" = ~3 yds

Border2 (For pieced border, add 10" to total length)



Yardage needed: seamless border length = 108" = ~3 yds

Backing

Yardage needed: 314" = ~8 3/4 yds

Binding

2.5" Strips required: 11

Yardage needed: 27.5" = ~7/8 yds

NOTE: Directional fabric may require an increase in the displayed fabric requirements.