

Log Cabin / Broken Dishes



@lowdotcloud

Overall quilt size: 59" x 59"



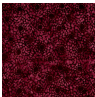


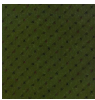


Blocks Used



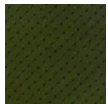
Log Cabin - 16 blocks

Block Info

Fabric	Pieces used	Fabric to cut	Total length needed	40" strips needed	Total Yardage
	30 Rectangle(s)	16 - 2" x 3 1/2" rectangle 14 - 2" x 9 1/2" rectangle	189 x 2"	5 - 2" wide	12" = ~3/8 yds
	32 Rectangle(s)	14 - 2" x 5" rectangle 14 - 2" x 11" rectangle 4 - 2" x 8" rectangle	256 x 2"	7 - 2" wide	16" = ~1/2 yds
	16 Rectangle(s)	16 - 2" x 6 1/2" rectangle	104 x 2"	3 - 2" wide	8" = ~1/4 yds
	17 Rectangle(s)	15 - 2" x 6 1/2" rectangle 2 - 2" x 12 1/2" rectangle	122.5 x 2"	4 - 2" wide	10" = ~3/8 yds
	18 Rectangle(s)	16 - 2" x 9 1/2" rectangle 2 - 2" x 12 1/2" rectangle	177 x 2"	5 - 2" wide	12" = ~3/8 yds
	9 Rectangle(s)	9 - 2" x 8" rectangle	72 x 2"	2 - 2" wide	6" = ~1/4 yds
	11 Rectangle(s)	11 - 2" x 11" rectangle	121 x 2"	4 - 2" wide	10" = ~3/8 yds
	15 Rectangle(s)	12 - 2" x 12 1/2" rectangle 2 - 2" x 9 1/2" rectangle 1 - 2" x 6 1/2" rectangle	175.5 x 2"	5 - 2" wide	12" = ~3/8 yds
	14 Rectangle(s)	10 - 2" x 5" rectangle 4 - 2" x 11" rectangle	94 x 2"	3 - 2" wide	8" = ~1/4 yds
	12 Rectangle(s)	12 - 2" x 8" rectangle	96 x 2"	3 - 2" wide	8" = ~1/4 yds
	16 Square(s)	16 - 3 1/2" square	56 x 3.5"	2 - 3 1/2" wide	9" = ~1/4 yds

	14 Rectangle(s)	8 - 2" x 5" rectangle 4 - 2" x 8" rectangle 2 - 2" x 11" rectangle	94 x 2"	3 - 2" wide	8" = ~1/4 yds
	2 Rectangle(s)	1 - 2" x 8" rectangle 1 - 2" x 11" rectangle	19 x 2"	1 - 2" wide	4" = ~1/8 yds
	2 Rectangle(s)	2 - 2" x 8" rectangle	16 x 2"	1 - 2" wide	4" = ~1/8 yds

Sashing



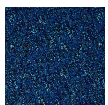
Yardage needed: 14 - 1.5" strips = 21" = ~5/8 yds

Border1 (For pieced border, add 10" to total length)



Yardage needed: seamless border length = 61" = ~1 3/4 yds

Border2 (For pieced border, add 10" to total length)



Yardage needed: seamless border length = 63" = ~1 3/4 yds

Backing

Yardage needed: 113" = ~3 1/4 yds

Binding

2.5" Strips required: 6

Yardage needed: 15" = ~1/2 yds

NOTE: Directional fabric may require an increase in the displayed fabric requirements.