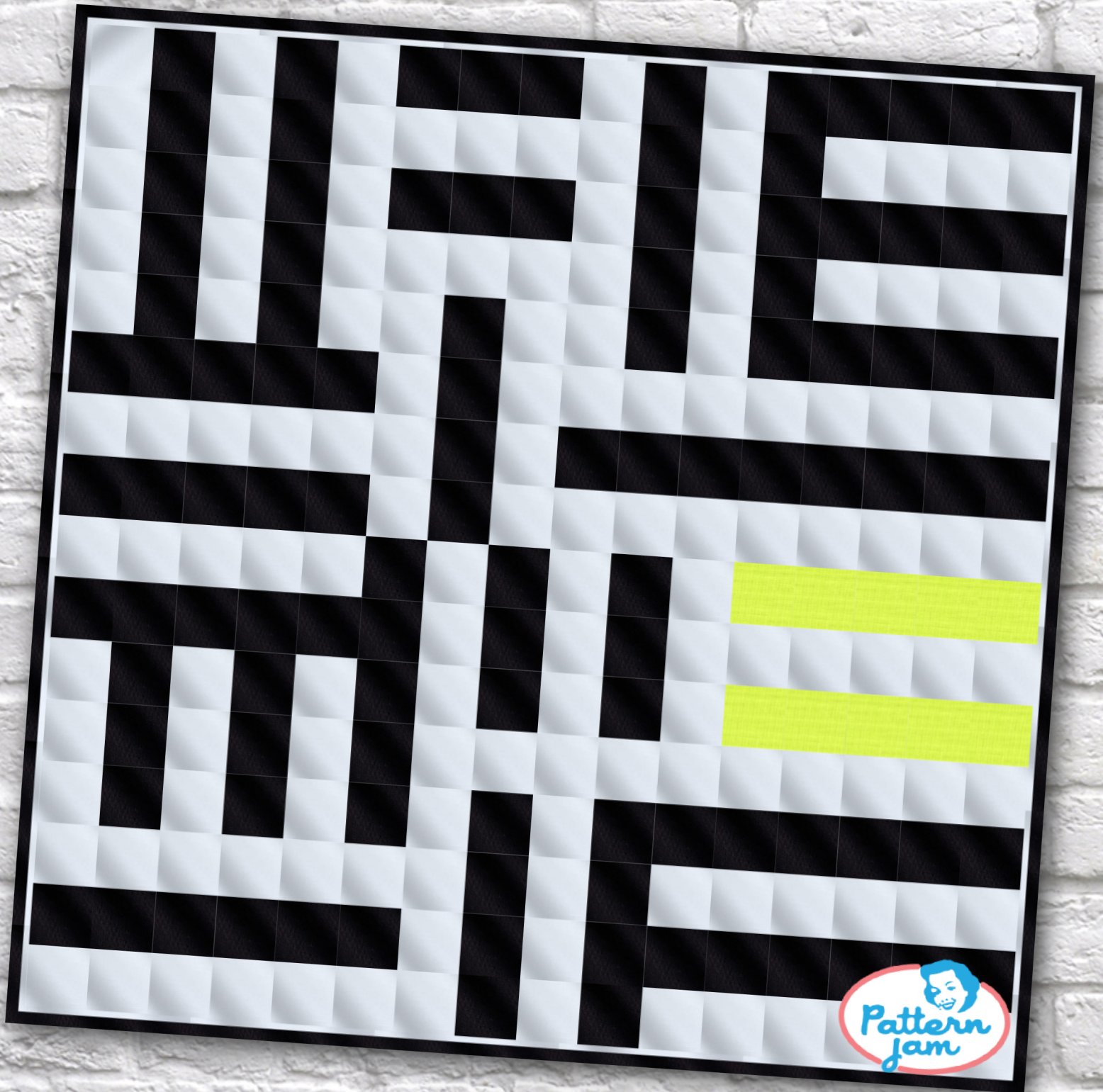


Stripes



@herkity

Overall quilt size: 70" x 70"


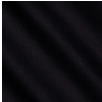



Blocks Used



Solid - 256 blocks

Block Info

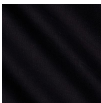
Fabric	Pieces used	Fabric to cut	Total length needed	40" strips needed	Total Yardage
	138 Square(s)	138 - 4 1/2" square	621 x 4.5"	16 - 4 1/2" wide	74" = ~2 1/8 yds
	108 Square(s)	108 - 4 1/2" square	486 x 4.5"	13 - 4 1/2" wide	61" = ~1 3/4 yds
	10 Square(s)	10 - 4 1/2" square	45 x 4.5"	2 - 4 1/2" wide	11" = ~3/8 yds

Border1 (For pieced border, add 10" to total length)



Yardage needed: seamless border length = 70" = ~2 yds

Border2 (For pieced border, add 10" to total length)



Yardage needed: seamless border length = 74" = ~2 1/8 yds

Backing

Yardage needed: 153" = ~4 1/4 yds

Binding

2.5" Strips required: 7

Yardage needed: 17.5" = ~1/2 yds

NOTE: Directional fabric may require an increase in the displayed fabric requirements.

