

A1



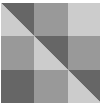
@azoreblue

Overall quilt size: 84" x 98"





Blocks Used



Nine Patch Straight Furrow - Right - 14 blocks



Ohio Star - 3 blocks



Friendship Star - 4 blocks



Sawtooth Star - 3 blocks



Sawtooth Star II - 3 blocks



Pinwheel - 1 blocks




Electric Fan - 1 blocks



Nine Patch Straight Furrow - Left - 1 blocks

Block Info

Fabric	Pieces used	Fabric to cut	Total length needed	40" strips needed	Total Yardage
	24 Square(s)	21 - 4 1/2"	94.5 x 4.5"	3 - 4 1/2" wide	49" = ~1 3/8 yds
	42 Half-square Triangle(s)	square	102.375 x 4.875"	3 - 4 7/8" wide	
	16 Quarter-square Triangle(s)	21 - 4 7/8"	19.5 x 6.5"	1 - 6 1/2" wide	
		square	12.75 x 4.25"	1 - 4 1/4" wide	
		3 - 6 1/2"	7.25 x 7.25"	1 - 7 1/4" wide	
		square			
		3 - 4 1/4"			
		square			
		1 - 7 1/4"			
		square			

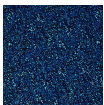


64 Square(s)	61 - 4 1/2"	274.5 x 4.5"	7 - 4 1/2" wide	82" = ~2 3/8 yds
56 Quarter-square	square	31.5 x 5.25"	1 - 5 1/4" wide	
Triangle(s)	6 - 5 1/4"	48.75 x 4.875"	2 - 4 7/8" wide	
47 Half-square Triangle(s)	square	46.5 x 3.875"	2 - 3 7/8" wide	
	10 - 4 7/8"	19.5 x 6.5"	1 - 6 1/2" wide	
	square	25.5 x 4.25"	1 - 4 1/4" wide	
	12 - 3 7/8"	13.75 x 6.875"	1 - 6 7/8" wide	
	square	14.5 x 7.25"	1 - 7 1/4" wide	
	3 - 6 1/2"			
	square			
	6 - 4 1/4"			
	square			
	2 - 6 7/8"			
	square			
	2 - 7 1/4"			
	square			



77 Half-square Triangle(s)	31 - 4 7/8"	151.125 x 4.875"	4 - 4 7/8" wide	82" = ~2 3/8 yds
55 Square(s)	square	193.5 x 4.5"	5 - 4 1/2" wide	
52 Quarter-square	43 - 4 1/2"	31.5 x 5.25"	1 - 5 1/4" wide	
Triangle(s)	square	42 x 3.5"	2 - 3 1/2" wide	
	6 - 5 1/4"	29 x 7.25"	1 - 7 1/4" wide	
	square	12.75 x 4.25"	1 - 4 1/4" wide	
	12 - 3 1/2"	55 x 6.875"	2 - 6 7/8" wide	
	square			
	4 - 7 1/4"			
	square			
	3 - 4 1/4"			
	square			
	8 - 6 7/8"			
	square			

## Sashing



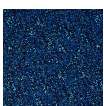
Yardage needed: 26 - 2.5" strips = 65" = ~1 7/8 yds

## Border1 (For pieced border, add 10" to total length)



Yardage needed: seamless border length = 94" = ~2 5/8 yds

## Border2 (For pieced border, add 10" to total length)



Yardage needed: seamless border length = 102" = ~2 7/8 yds

## Backing

Yardage needed: 244" = ~6 7/8 yds

## Binding

2.5" Strips required: 10

Yardage needed: 25" = ~3/4 yds

NOTE: Directional fabric may require an increase in the displayed fabric requirements.