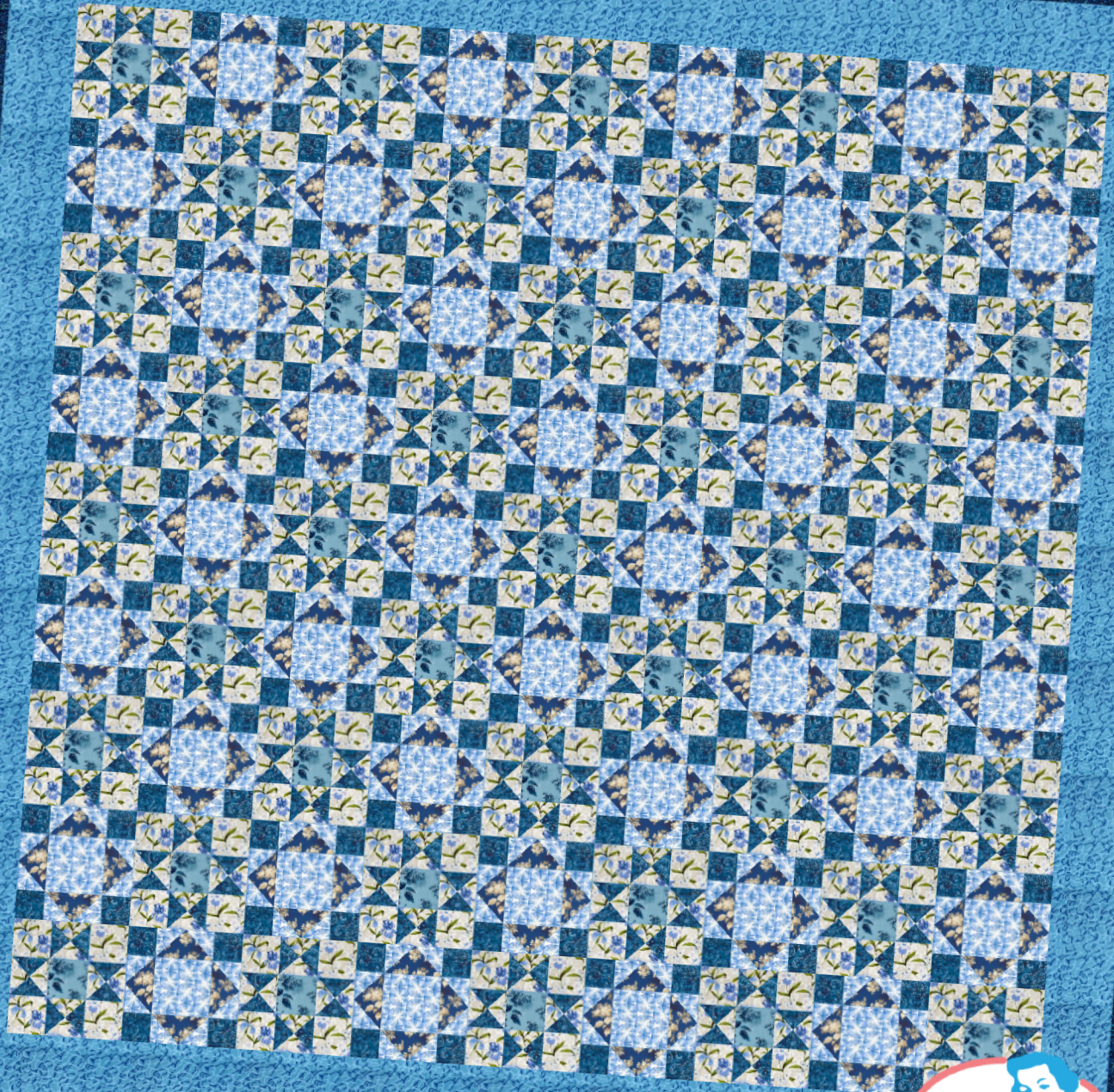


Bedroom



@hdsporty1999c

Overall quilt size: 126" x 126"



Blocks Used

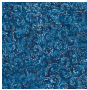






Ohio Star - 41 blocks

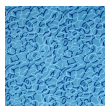


King's Crown - 40 blocks

Block Info

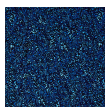
Fabric	Pieces used	Fabric to cut	Total length needed	40" strips needed	Total Yardage needed
	328 Quarter-square Triangle(s) 160 Square(s)	82 - 5 1/4" square 160 - 3 1/2" square	430.5 x 5.25" 560 x 3.5"	11 - 5 1/4" wide 14 - 3 1/2" wide	109" = ~3 1/8 yds
	328 Quarter-square Triangle(s) 164 Square(s)	82 - 5 1/4" square 164 - 4 1/2" square	430.5 x 5.25" 738 x 4.5"	11 - 5 1/4" wide 19 - 4 1/2" wide	146" = ~4 1/8 yds
	41 Square(s)	41 - 4 1/2" square	184.5 x 4.5"	5 - 4 1/2" wide	25" = ~3/4 yds
	40 Square(s) 320 Half-square Triangle(s)	40 - 6 1/2" square 160 - 3 7/8" square	260 x 6.5" 620 x 3.875"	7 - 6 1/2" wide 16 - 3 7/8" wide	110" = ~3 1/8 yds
	160 Quarter-square Triangle(s)	40 - 7 1/4" square	290 x 7.25"	8 - 7 1/4" wide	60" = ~1 3/4 yds

Border1 (For pieced border, add 10" to total length)



Yardage needed: seamless border length = 124" = ~3 1/2 yds

Border2 (For pieced border, add 10" to total length)



Yardage needed: seamless border length = 130" = ~3 5/8 yds

Backing

Yardage needed: 449" = ~12 1/2 yds

Binding

2.5" Strips required: 13

Yardage needed: 32.5" = ~1 yds

NOTE: Directional fabric may require an increase in the displayed fabric requirements.