

All Wrapped Up With A Bow



@robinedels

Overall quilt size: 28" x 28"



Blocks Used



Solid - 73 blocks







Half Square Triangle - 38 blocks

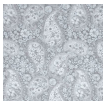


Half Square Triangle - 10 blocks

Block Info

Fabric	Pieces used	Fabric to cut	Total length needed	40" strips needed	Total Yardage
	20 Square(s) 48 Half-square Triangle(s)	20 - 2 1/2" square 25 - 2 7/8" square	50 x 2.5" 71.875 x 2.875"	2 - 2 1/2" wide 2 - 2 7/8" wide	13" = ~3/8 yds
	28 Square(s) 24 Half-square Triangle(s)	28 - 2 1/2" square 12 - 2 7/8" square	70 x 2.5" 34.5 x 2.875"	2 - 2 1/2" wide 1 - 2 7/8" wide	10" = ~3/8 yds
	21 Square(s)	21 - 2 1/2" square	52.5 x 2.5"	2 - 2 1/2" wide	7" = ~1/4 yds
	24 Half-square Triangle(s) 4 Square(s)	13 - 2 7/8" square 4 - 2 1/2" square	37.375 x 2.875" 10 x 2.5"	1 - 2 7/8" wide 1 - 2 1/2" wide	8" = ~1/4 yds

Border1 (For pieced border, add 10" to total length)



Yardage needed: seamless border length = 32" = ~1 yds

Backing

Yardage needed: 33" = ~1 yds

Binding

2.5" Strips required: 3

Yardage needed: 7.5" = ~1/4 yds

NOTE: Directional fabric may require an increase in the displayed fabric requirements.