

# Star Gazing



@schoenfeldt37

Overall quilt size: 47" x 65"





## Blocks Used



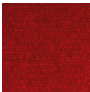


Solid - 223 blocks

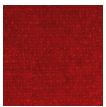


Half Square Triangle - 24 blocks

## Block Info

Fabric	Pieces used	Fabric to cut	Total length needed	40" strips needed	Total Yardage needed
	104 Square(s)	104 - 3 1/2" square	364 x 3.5"	10 - 3 1/2" wide	37" = ~1 1/8 yds
	71 Square(s) 24 Half-square Triangle(s)	71 - 3 1/2" square 12 - 3 7/8" square	248.5 x 3.5" 46.5 x 3.875"	7 - 3 1/2" wide 2 - 3 7/8" wide	35" = ~1 yds
	48 Square(s) 24 Half-square Triangle(s)	48 - 3 1/2" square 12 - 3 7/8" square	168 x 3.5" 46.5 x 3.875"	5 - 3 1/2" wide 2 - 3 7/8" wide	28" = ~7/8 yds

## Border1 (For pieced border, add 10" to total length)



Yardage needed: seamless border length = 69" = ~2 yds

## Backing

Yardage needed: 101" = ~2 7/8 yds

## Binding

2.5" Strips required: 6

Yardage needed: 15" = ~1/2 yds

NOTE: Directional fabric may require an increase in the displayed fabric requirements.

