

Hibiscus Simplicity



@winteraaronm

Overall quilt size: 72" x 96"



Blocks Used

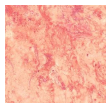


Half Square Triangle - 384 blocks

Block Info

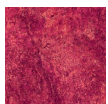
Fabric	Pieces used	Fabric to cut	Total length needed	40" strips needed	Total Yardage
	288 Half-square Triangle(s)	144 - 3 7/8" square	558 x 3.875"	14 - 3 7/8" wide	57" = ~1 5/8 yds
	96 Half-square Triangle(s)	48 - 3 7/8" square	186 x 3.875"	5 - 3 7/8" wide	22" = ~5/8 yds
	288 Half-square Triangle(s)	144 - 3 7/8" square	558 x 3.875"	14 - 3 7/8" wide	57" = ~1 5/8 yds
	96 Half-square Triangle(s)	48 - 3 7/8" square	186 x 3.875"	5 - 3 7/8" wide	22" = ~5/8 yds

Border1 (For pieced border, add 10" to total length)



Yardage needed: seamless border length = 88" = ~2 1/2 yds

Border2 (For pieced border, add 10" to total length)



Yardage needed: seamless border length = 100" = ~2 7/8 yds

Backing

Yardage needed: 208" = ~5 7/8 yds

Binding

2.5" Strips required: 9

Yardage needed: 22.5" = ~5/8 yds

NOTE: Directional fabric may require an increase in the displayed fabric requirements.