

5



@abigailmanthei

Overall quilt size: 115" x 115"







## Blocks Used

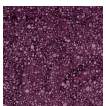


Hourglass - 100 blocks

## Block Info

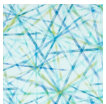
Fabric	Pieces used	Fabric to cut	Total length needed	40" strips needed	Total Yardage
	200 Quarter-square Triangle(s)	50 - 11 1/4" square	562.5 x 11.25"	15 - 11 1/4" wide	171" = ~4 3/4 yds
	200 Quarter-square Triangle(s)	50 - 11 1/4" square	562.5 x 11.25"	15 - 11 1/4" wide	171" = ~4 3/4 yds

## Sashing



Yardage needed: 67 - 1.5" strips = 100.5" = ~2 7/8 yds

## Border1 (For pieced border, add 10" to total length)



Yardage needed: seamless border length = 119" = ~3 3/8 yds

## Backing

Yardage needed: 379" = ~10 5/8 yds

## Binding

2.5" Strips required: 12

Yardage needed: 30" = ~7/8 yds

NOTE: Directional fabric may require an increase in the displayed fabric requirements.