

Large Quilt, Greens, Centered Pattern



@courtmfiala

Overall quilt size: 100" x 100"

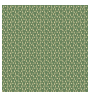






Blocks Used



Sawtooth Star II - 49 blocks

Block Info

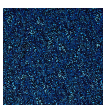
Fabric	Pieces used	Fabric to cut	Total length needed	40" strips needed	Total Yardage needed
	196 Quarter-square Triangle(s)	49 - 4 1/4" square	208.25 x 4.25"	6 - 4 1/4" wide	28" = ~7/8 yds
	196 Quarter-square Triangle(s) 196 Half-square Triangle(s)	49 - 4 1/4" square 98 - 6 7/8" square	208.25 x 4.25" 673.75 x 6.875"	6 - 4 1/4" wide 17 - 6 7/8" wide	145" = ~4 1/8 yds
	18 Square(s) 144 Quarter-square Triangle(s)	18 - 6 1/2" square 36 - 4 1/4" square	117 x 6.5" 153 x 4.25"	3 - 6 1/2" wide 4 - 4 1/4" wide	39" = ~1 1/8 yds
	15 Square(s) 120 Quarter-square Triangle(s)	15 - 6 1/2" square 30 - 4 1/4" square	97.5 x 6.5" 127.5 x 4.25"	3 - 6 1/2" wide 4 - 4 1/4" wide	39" = ~1 1/8 yds
	16 Square(s) 128 Quarter-square Triangle(s)	16 - 6 1/2" square 32 - 4 1/4" square	104 x 6.5" 136 x 4.25"	3 - 6 1/2" wide 4 - 4 1/4" wide	39" = ~1 1/8 yds

Sashing



Yardage needed: 38 - 1.5" strips = 57" = ~1 5/8 yds

Border1 (For pieced border, add 10" to total length)



Yardage needed: seamless border length = 104" = ~3 yds

Backing

Yardage needed: 292" = ~8 1/8 yds

Binding

2.5" Strips required: 10

Yardage needed: 25" = ~3/4 yds

NOTE: Directional fabric may require an increase in the displayed fabric requirements.