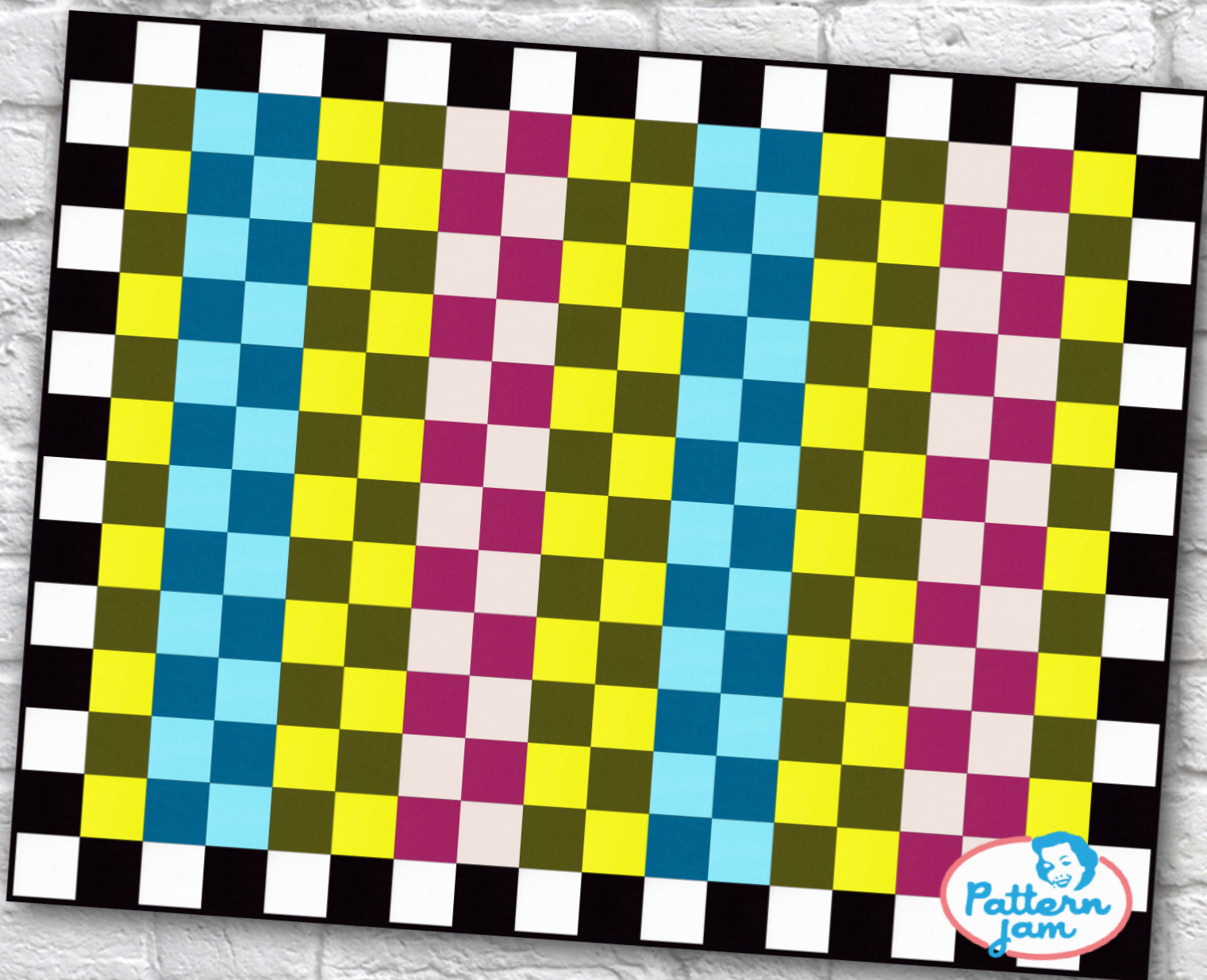


Bright Checkers 1



@facelovesart

Overall quilt size: 92" x 72"




Blocks Used

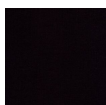


Solid - 252 blocks

Block Info

Fabric	Pieces used	Fabric to cut	Total length needed	40" strips needed	Total Yardage
	30 Square(s)	30 - 5 1/2" square	165 x 5.5"	5 - 5 1/2" wide	30" = ~7/8 yds
	30 Square(s)	30 - 5 1/2" square	165 x 5.5"	5 - 5 1/2" wide	30" = ~7/8 yds
	48 Square(s)	48 - 5 1/2" square	264 x 5.5"	7 - 5 1/2" wide	41" = ~1 1/4 yds
	24 Square(s)	24 - 5 1/2" square	132 x 5.5"	4 - 5 1/2" wide	24" = ~3/4 yds
	24 Square(s)	24 - 5 1/2" square	132 x 5.5"	4 - 5 1/2" wide	24" = ~3/4 yds
	48 Square(s)	48 - 5 1/2" square	264 x 5.5"	7 - 5 1/2" wide	41" = ~1 1/4 yds
	24 Square(s)	24 - 5 1/2" square	132 x 5.5"	4 - 5 1/2" wide	24" = ~3/4 yds
	24 Square(s)	24 - 5 1/2" square	132 x 5.5"	4 - 5 1/2" wide	24" = ~3/4 yds

Border1 (For pieced border, add 10" to total length)



Yardage needed: seamless border length = 94" = ~2 5/8 yds

Backing

Yardage needed: 200" = ~5 5/8 yds

Binding

2.5" Strips required: 9

Yardage needed: 22.5" = ~5/8 yds

NOTE: Directional fabric may require an increase in the displayed fabric requirements.