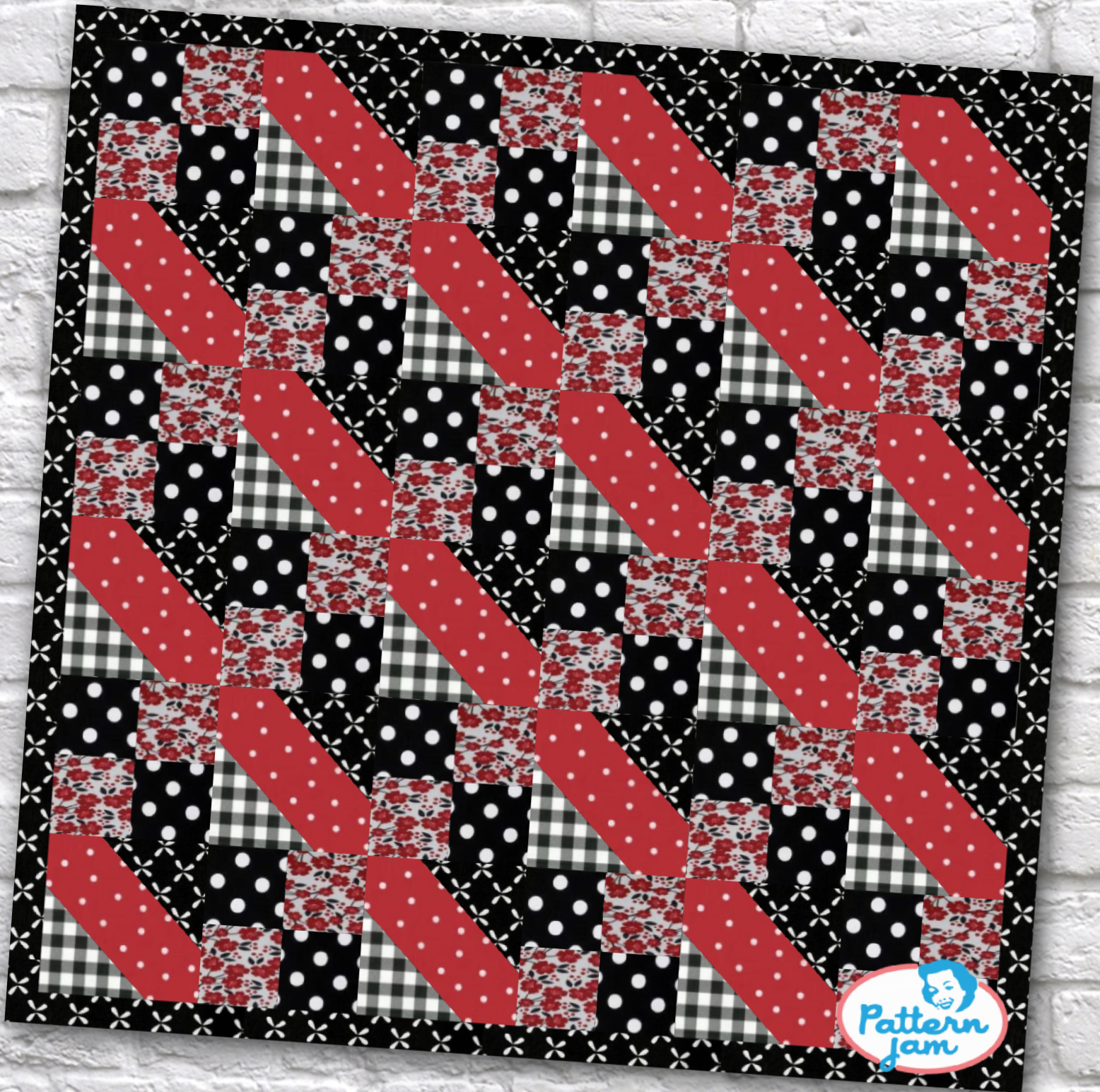


Salem May



@sdkohl

Overall quilt size: 52" x 52"



Blocks Used


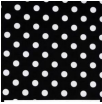
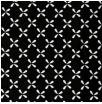

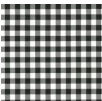


Four Patch - 18 blocks

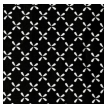


New Thing - 18 blocks

Block Info

Fabric	Pieces used	Fabric to cut	Total length needed	40" strips needed	Total Yardage
	36 Square(s)	36 - 4 1/2" square	162 x 4.5"	5 - 4 1/2" wide	25" = ~3/4 yds
	36 Square(s)	36 - 4 1/2" square	162 x 4.5"	5 - 4 1/2" wide	25" = ~3/4 yds
	18 Unique(s)	18 - Undefined	0 x 0"	0 - 0" wide	
	18 Unique(s)	18 - Undefined	0 x 0"	0 - 0" wide	
	18 Unique(s)	18 - Undefined	0 x 0"	0 - 0" wide	

Border1 (For pieced border, add 10" to total length)



Yardage needed: seamless border length = 56" = ~1 5/8 yds

Backing

Yardage needed: 90" = ~2 1/2 yds

Binding

2.5" Strips required: 6

Yardage needed: 15" = ~1/2 yds

NOTE: Directional fabric may require an increase in the displayed fabric requirements.