

Mom And Dad Final



@rachelmyersmedia

Overall quilt size: 84" x 96"



Blocks Used

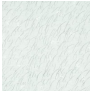





Half Square Triangle - 130 blocks

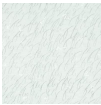


Half Square Triangle - 38 blocks

Block Info

Fabric	Pieces used	Fabric to cut	Total length needed	40" strips needed	Total Yardage
	168 Half-square Triangle(s)	84 - 6 7/8" square	577.5 x 6.875"	15 - 6 7/8" wide	106" = ~3 yds
	24 Half-square Triangle(s)	12 - 6 7/8" square	82.5 x 6.875"	3 - 6 7/8" wide	23" = ~3/4 yds
	24 Half-square Triangle(s)	13 - 6 7/8" square	89.375 x 6.875"	3 - 6 7/8" wide	23" = ~3/4 yds
	120 Half-square Triangle(s)	61 - 6 7/8" square	419.375 x 6.875"	11 - 6 7/8" wide	78" = ~2 1/4 yds

Border1 (For pieced border, add 10" to total length)



Yardage needed: seamless border length = 96" = ~2 3/4 yds

Border2 (For pieced border, add 10" to total length)



Yardage needed: seamless border length = 100" = ~2 7/8 yds

Backing

Yardage needed: 240" = ~6 3/4 yds

Binding

2.5" Strips required: 9

Yardage needed: 22.5" = ~5/8 yds

NOTE: Directional fabric may require an increase in the displayed fabric requirements.